

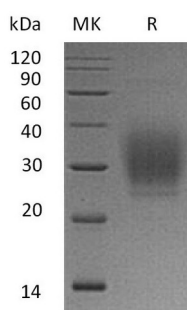
**Product Name: Recombinant Human PTH1R (C-6His)**  
**Catalog #: PHH1401**



## Summary

<b>Name</b>	PTH1R/PTHR1
<b>Purity</b>	Greater than 95% as determined by reducing SDS-PAGE
<b>Endotoxin level</b>	<1 EU/μg as determined by LAL test.
<b>Construction</b>	Recombinant Human Parathyroid Hormone 1 Receptor is produced by our Mammalian expression system and the target gene encoding Tyr23-Met189 is expressed with a 6His tag at the C-terminus.
<b>Accession #</b>	Q03431
<b>Host</b>	Human Cells
<b>Species</b>	Human
<b>Predicted Molecular Mass</b>	20.3 KDa
<b>Formulation</b>	Lyophilized from a 0.2 μm filtered solution of PBS, pH 7.4.
<b>Shipping</b>	The product is shipped at ambient temperature. Upon receipt, store it immediately at the temperature listed below.
<b>Stability&amp;Storage</b>	Store at ≤-70°C, stable for 6 months after receipt. Store at ≤-70°C, stable for 3 months under sterile conditions after opening. Please minimize freeze-thaw cycles.
<b>Reconstitution</b>	Always centrifuge tubes before opening. Do not mix by vortex or pipetting. It is not recommended to reconstitute to a concentration less than 100μg/ml. Dissolve the lyophilized protein in distilled water. Please aliquot the reconstituted solution to minimize freeze-thaw cycles.

## SDS-PAGE image



## Background

**Product Name: Recombinant Human PTH1R (C-6His)**  
**Catalog #: PHH1401**

---



**Alternative Names**

Parathyroid hormone/parathyroid hormone-related peptide receptor;PTH/PTHrP type I receptor;PTH/PTHr receptor;Parathyroid hormone 1 receptor;PTH1 receptor;PTH1R

**Background**

Parathyroid hormone/parathyroid hormone-related peptide receptor also known as parathyroid hormone 1 receptor (PTH1R) is a protein that in humans is encoded by the PTH1R gene, Belongs to the G-protein coupled receptor 2 family.PTH1R functions as a receptor for parathyroid hormone (PTH) and for parathyroid hormone-related protein (PTHrP), also called parathyroid hormone-like hormone (PTHLH).

**Note**

For Research Use Only , Not for Diagnostic Use.