

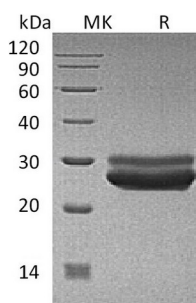
**Product Name: Recombinant Human PRL (C-6His)**  
**Catalog #: PHH1374**



## Summary

<b>Name</b>	Prolactin/PRL
<b>Purity</b>	Greater than 95% as determined by reducing SDS-PAGE
<b>Endotoxin level</b>	<1 EU/μg as determined by LAL test.
<b>Construction</b>	Recombinant Human Prolactin is produced by our Mammalian expression system and the target gene encoding Leu29-Cys227 is expressed with a 6His tag at the C-terminus.
<b>Accession #</b>	P01236
<b>Host</b>	Human Cells
<b>Species</b>	Human
<b>Predicted Molecular Mass</b>	23.9 KDa
<b>Formulation</b>	Lyophilized from a 0.2 μm filtered solution of 20mM PB, 150mM NaCl, 5% Trehalose, 5% Mannitol, 0.01% Tween80, pH 7.4.
<b>Shipping</b>	The product is shipped at ambient temperature. Upon receipt, store it immediately at the temperature listed below.
<b>Stability&amp;Storage</b>	Store at ≤-70°C, stable for 6 months after receipt. Store at ≤-70°C, stable for 3 months under sterile conditions after opening. Please minimize freeze-thaw cycles.
<b>Reconstitution</b>	Always centrifuge tubes before opening. Do not mix by vortex or pipetting. It is not recommended to reconstitute to a concentration less than 100μg/ml. Dissolve the lyophilized protein in distilled water. Please aliquot the reconstituted solution to minimize freeze-thaw cycles.

## SDS-PAGE image



## Background

**Product Name: Recombinant Human PRL (C-6His)**  
**Catalog #: PHH1374**

---



**Alternative Names**

Prolactin; PRL;

**Background**

Prolactin (PRL) is a secreted neuroendocrine pituitary hormone that acts primarily on the mammary gland to promote lactation, but has pleiotropic effects in both males and females. Non-glycosylated prolactin is produced by the pituitary and packaged in storage granules before secretion, while glycosylated prolactin is reported to be constitutively secreted, have lower biological potency, and be removed from the circulation more quickly. Prolactin is synthesized mainly by the anterior pituitary in all mammals, where secretion is under tonic inhibition by hypothalamic dopamine. In humans, prolactin is also produced peripherally. Prolactin expression is low during early human pregnancy, but increases in late pregnancy. The prolactin receptor (PRLR) is a transmembrane type I glycoprotein that belongs to the cytokine hematopoietic receptor family. prolactin molecule is thought to bind two receptor molecules. In addition to its lactogenic activity, peripherally produced prolactin plays roles in breast and prostate cancer development, regulation of reproductive function, and immunoregulation.

**Note**

For Research Use Only , Not for Diagnostic Use.