

Product Name: Recombinant Human PSG2 (C-6His)
Catalog #: PHH1365

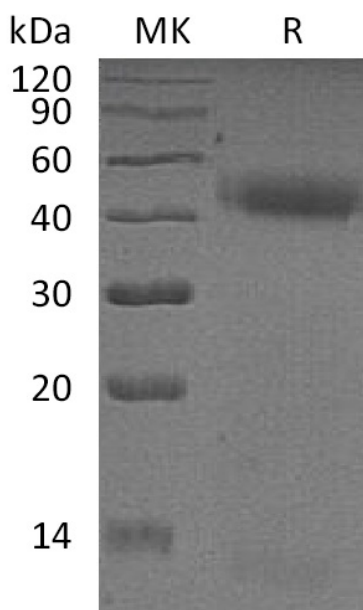


Summary

Name	Pregnancy-specific beta-1-glycoprotein 2 /PSG2/PSBG2
Purity	Greater than 95% as determined by reducing SDS-PAGE
Endotoxin level	<1 EU/μg as determined by LAL test.
Construction	Recombinant Human Pregnancy-specific beta-1-glycoprotein 2 is produced by our Mammalian expression system and the target gene encoding Gln35-Thr335 is expressed with a 6His tag at the C-terminus.
Accession #	P11465
Host	Human Cells
Species	Human
Predicted Molecular Mass	34.5 KDa
Formulation	Supplied as a 0.2 μm filtered solution of 20mM PB, 150mM NaCl, pH 7.4.
Shipping	The product is shipped on dry ice/polar packs. Upon receipt, store it immediately at the temperature listed below.
Stability&Storage	Store at ≤-70°C, stable for 6 months after receipt. Store at ≤-70°C, stable for 3 months under sterile conditions after opening. Please minimize freeze-thaw cycles.
Reconstitution	

SDS-PAGE image

Product Name: Recombinant Human PSG2 (C-6His)
Catalog #: PHH1365



Alternative Names

Pregnancy specific beta-1-glycoprotein 2; PSBG2; Pregnancy-specific beta-1 glycoprotein E; pregnancy-specific beta-1-glycoprotein 2; pregnancy-specific beta-1-glycoprotein 7; PSG2

Background

PSG2 is a secreted protein that in humans is encoded by the PSG2 gene. It is a member of the human pregnancy-specific glycoproteins (PSGs) family. These proteins are synthesized in large amounts by placental trophoblasts and released into the maternal circulation during pregnancy. PSG2 consist of a single N domain, with structural similarity to the immunoglobulin variable domains, followed by a variable number of immunoglobulin constant-like A and/or B domains. It has an arg-gly-asp (RGD) motif, which has been shown to function as an adhesion recognition signal for several integrins, in the N-terminal domain.

Note

For Research Use Only , Not for Diagnostic Use.