

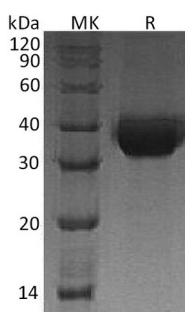
Product Name: Recombinant Human DLK-1 (C-6His)
Catalog #: PHH1363



Summary

Name	Pref-1/DLK-1/FA1
Purity	Greater than 95% as determined by reducing SDS-PAGE
Endotoxin level	<1 EU/μg as determined by LAL test.
Construction	Recombinant Human Preadipocyte Factor-1/Protein Delta Homolog 1/Fetal Antigen is produced by our Mammalian expression system and the target gene encoding Ala24-Pro297(Ser260Asn) is expressed with a 6His tag at the C-terminus.
Accession #	AAH13197.1
Host	Human Cells
Species	Human
Predicted Molecular Mass	30.15 KDa
Formulation	Lyophilized from a 0.2 μm filtered solution of 20mM PB, 150mM NaCl, pH 7.4.
Shipping	The product is shipped at ambient temperature. Upon receipt, store it immediately at the temperature listed below.
Stability&Storage	Store at ≤-70°C, stable for 6 months after receipt. Store at ≤-70°C, stable for 3 months under sterile conditions after opening. Please minimize freeze-thaw cycles.
Reconstitution	Always centrifuge tubes before opening. Do not mix by vortex or pipetting. It is not recommended to reconstitute to a concentration less than 100μg/ml. Dissolve the lyophilized protein in distilled water. Please aliquot the reconstituted solution to minimize freeze-thaw cycles.

SDS-PAGE image



Background

Product Name: Recombinant Human DLK-1 (C-6His)
Catalog #: PHH1363



Alternative Names

Protein Delta Homolog 1; DLK-1; pG2; DLK1; DLK

Background

Protein Delta Homolog 1 (DLK-1) is a transmembrane protein which contains a signal peptide, an extracellular domain with six tandem epidermal growth factor (EGF)-like domains, a single pass transmembrane domain, and a short cytoplasmic tail. It is found within the stromal cells in close contact to the vascular structure of placental villi, yolk sac, fetal liver, adrenal cortex and pancreas and in the beta cells of the islets of Langerhans in the adult pancreas. In addition, it is detected in some forms of neuroendocrine lung tumor tissue. DLK-1 may have an important role in neuroendocrine differentiation.

Note

For Research Use Only , Not for Diagnostic Use.