

Product Name: Recombinant Human PDPN (C-Fc)
Catalog #: PHH1352

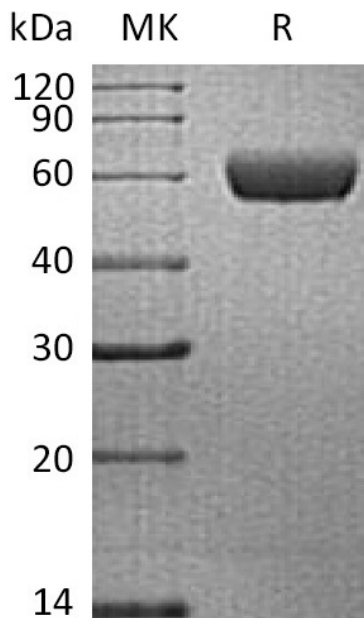


Summary

Name	Podoplanin/PDPN/GP36
Purity	Greater than 95% as determined by reducing SDS-PAGE
Endotoxin level	<1 EU/μg as determined by LAL test.
Construction	Recombinant Human Podoplanin is produced by our Mammalian expression system and the target gene encoding Ala23-Leu131 is expressed with a human IgG1 Fc tag at the C-terminus.
Accession #	Q86YL7
Host	Human Cells
Species	Human
Predicted Molecular Mass	38.3 KDa
Formulation	Lyophilized from a 0.2 μm filtered solution of PBS, pH 7.4.
Shipping	The product is shipped at ambient temperature. Upon receipt, store it immediately at the temperature listed below.
Stability&Storage	Lyophilized protein should be stored at ≤ -20°C, stable for one year after receipt. Reconstituted protein solution can be stored at 2-8°C for 2-7 days. Aliquots of reconstituted samples are stable at ≤ -20°C for 3 months.
Reconstitution	Always centrifuge tubes before opening. Do not mix by vortex or pipetting. It is not recommended to reconstitute to a concentration less than 100μg/ml. Dissolve the lyophilized protein in distilled water. Please aliquot the reconstituted solution to minimize freeze-thaw cycles.

SDS-PAGE image

Product Name: Recombinant Human PDPN (C-Fc)
Catalog #: PHH1352



Alternative Names

Podoplanin; Aggrus; Glycoprotein 36; Gp36; PA2.26 Antigen; T1-Alpha; T1A; PDPN; GP36

Background

Podoplanin is a type-1 transmembrane protein that belongs to Podoplanin family. PDPN expressed in various specialized cell types throughout the body. It highly expressed in placenta, lung, skeletal muscle and brain, weakly expressed in brain, kidney and liver. In placenta, PDPN expressed on the apical plasma membrane of endothelium, in lung, expressed in alveolar epithelium. PDPN physiological function is related to its mucin-type character. PDPN may be involved in cell migration and/or actin cytoskeleton organization. When expressed in keratinocytes, induces changes in cell morphology with transfected cells showing an elongated shape, numerous membrane protrusions, and major reorganization of the actin cytoskeleton, increased motility and decreased cell adhesion. It requires for normal lung cell proliferation and alveolus formation at birth and Induces platelet aggregation. Nevertheless, it doesn't have any effect on amino acid transport and the aquaporin-type water channels.

Note

For Research Use Only , Not for Diagnostic Use.