

Product Name: Recombinant Human PECAM-1 (C-6His)
Catalog #: PHH1337

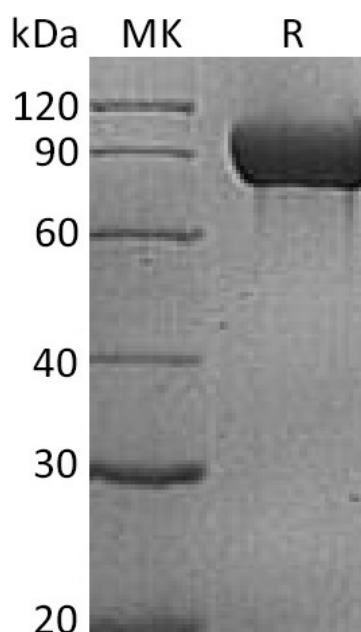


Summary

Name	CD31/PECAM-1/Platelet Endothelial Cell Adhesion Molecule
Purity	Greater than 95% as determined by reducing SDS-PAGE
Endotoxin level	<1 EU/μg as determined by LAL test.
Construction	Recombinant Human Platelet Endothelial Cell Adhesion Molecule is produced by our Mammalian expression system and the target gene encoding Gln28/xadLys601 is expressed with a 6His tag at the C-terminus.
Accession #	AAH51822.1
Host	Human Cells
Species	Human
Predicted Molecular Mass	65.3 KDa
Formulation	Lyophilized from a 0.2 μm filtered solution of PBS, 1mM EDTA, pH 7.4.
Shipping	The product is shipped at ambient temperature. Upon receipt, store it immediately at the temperature listed below.
Stability&Storage	Store at ≤-70°C, stable for 6 months after receipt. Store at ≤-70°C, stable for 3 months under sterile conditions after opening. Please minimize freeze-thaw cycles.
Reconstitution	Always centrifuge tubes before opening. Do not mix by vortex or pipetting. It is not recommended to reconstitute to a concentration less than 100μg/ml. Dissolve the lyophilized protein in distilled water. Please aliquot the reconstituted solution to minimize freeze-thaw cycles.

SDS-PAGE image

Product Name: Recombinant Human PECAM-1 (C-6His)
Catalog #: PHH1337



Alternative Names

Platelet endothelial cell adhesion molecule; PECAM-1; EndoCAM; GPIIA; PECA1; CD31; PECAM1

Background

Platelet Endothelial Cell Adhesion Molecule (PECAM1, CD31), is a heavily glycosylated transmembrane protein belonging to the immunoglobulin (Ig) superfamily of cell adhesion molecules. CD31 is composed of an extracellular domain (ECD) of 574 amino acids (aa) containing six Ig-like domains, a transmembrane domain, and a 118 aa cytoplasmic domain. CD31 is highly expressed on endothelial cells and at a lower level on platelets, granulocytes, macrophages, dendritic cells, T and B cells, and natural killer (NK) cells. It is involved in cell adhesion and is required for transepithelial migration of leukocytes (TEM). CD31 acts as a homophilic receptor through its extracellular domain and is involved in downstream signaling via its cytoplasmic domain. This domain contains highly conserved ITIM motifs which, once tyrosine phosphorylated, recruit and activate the signaling molecules Src and SHP2. The resulting inhibition of TCR signaling increases the activation threshold of T cells, thus reinforcing peripheral tolerance and preventing development of autoimmunity. CD31 additionally regulates immune responses by acting as a key inhibitory receptor in dendritic cell development. CD31 is required for the transendothelial migration of leukocytes through intercellular junctions of vascular endothelial cells.

Note

For Research Use Only , Not for Diagnostic Use.