

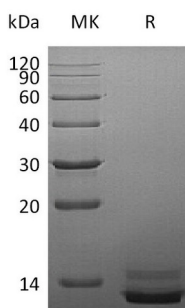
**Product Name: Recombinant Human PPY (C-6His)**  
**Catalog #: PHH1262**



## Summary

<b>Name</b>	Pancreatic prohormone/PPY/PPN
<b>Purity</b>	Greater than 95% as determined by reducing SDS-PAGE
<b>Endotoxin level</b>	<1 EU/μg as determined by LAL test.
<b>Construction</b>	Recombinant Human Pancreatic Polypeptide is produced by our Mammalian expression system and the target gene encoding Ala30-Arg88 is expressed with a 6His tag at the C-terminus.
<b>Accession #</b>	P01298
<b>Host</b>	Human Cells
<b>Species</b>	Human
<b>Predicted Molecular Mass</b>	7.8 KDa
<b>Formulation</b>	Lyophilized from a 0.2 μm filtered solution of 20mM PB, 150mM NaCl, pH 7.4.
<b>Shipping</b>	The product is shipped at ambient temperature. Upon receipt, store it immediately at the temperature listed below.
<b>Stability&amp;Storage</b>	Store at ≤-70°C, stable for 6 months after receipt. Store at ≤-70°C, stable for 3 months under sterile conditions after opening. Please minimize freeze-thaw cycles.
<b>Reconstitution</b>	Always centrifuge tubes before opening. Do not mix by vortex or pipetting. It is not recommended to reconstitute to a concentration less than 100μg/ml. Dissolve the lyophilized protein in distilled water. Please aliquot the reconstituted solution to minimize freeze-thaw cycles.

## SDS-PAGE image



## Background

**Product Name: Recombinant Human PPY (C-6His)**  
**Catalog #: PHH1262**

---



**Alternative Names**

Pancreatic prohormone;Pancreatic polypeptide;PNP;PPY

**Background**

PPY belongs to the NPY family and is synthesized as a 95 aa polypeptide precursor in the pancreatic islets of Langerhans. It is cleaved into two peptide products; the active hormone of 36 aa and an icosapeptide of unknown function. The hormone acts as a regulator of pancreatic and gastrointestinal functions and may be important in the regulation of food intake. Plasma level of this hormone has been shown to be reduced in conditions associated with increased food intake and elevated in anorexia nervosa.

**Note**

For Research Use Only , Not for Diagnostic Use.