

**Product Name: Recombinant Human NKG2A (N-8His)**  
**Catalog #: PHH1230**

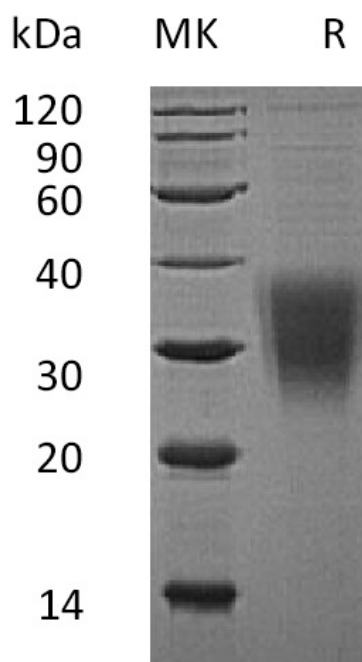


## Summary

<b>Name</b>	NKG2A/NKG2-B Type II Integral Membrane Protein/CD159a
<b>Purity</b>	Greater than 95% as determined by reducing SDS-PAGE
<b>Endotoxin level</b>	<1 EU/μg as determined by LAL test.
<b>Construction</b>	Recombinant Human NKG2-A/NKG2-B Type II Integral Membrane Protein is produced by our Mammalian expression system and the target gene encoding Arg100-Leu233 is expressed with a 8His tag at the N-terminus.
<b>Accession #</b>	P26715
<b>Host</b>	Human Cells
<b>Species</b>	Human
<b>Predicted Molecular Mass</b>	16.5 KDa
<b>Formulation</b>	Lyophilized from a 0.2 μm filtered solution of PBS, pH 7.4.
<b>Shipping</b>	The product is shipped at ambient temperature. Upon receipt, store it immediately at the temperature listed below.
<b>Stability&amp;Storage</b>	Store at ≤-70°C, stable for 6 months after receipt. Store at ≤-70°C, stable for 3 months under sterile conditions after opening. Please minimize freeze-thaw cycles.
<b>Reconstitution</b>	Always centrifuge tubes before opening. Do not mix by vortex or pipetting. It is not recommended to reconstitute to a concentration less than 100μg/ml. Dissolve the lyophilized protein in distilled water. Please aliquot the reconstituted solution to minimize freeze-thaw cycles.

## SDS-PAGE image

**Product Name: Recombinant Human NKG2A (N-8His)**  
**Catalog #: PHH1230**



### Alternative Names

NKG2-A/NKG2-B type II integral membrane protein; CD159 antigen-like family member A; NK cell receptor A; NKG2-A/B-activating NK receptor; CD159a; KLRC1; NKG2A

### Background

NKG2-A/NKG2-B Type II Integral Membrane Protein contains 1 C-type lectin domain and belongs to the killer cell lectin-like receptor family. The killer cell lectin-like receptor family is a group of transmembrane proteins preferentially expressed in NK cells. Members of this proteins is characterized by the type II membrane orientation and the presence of a C-type lectin domain. NKG2 is expressed only in NK-cells, but not in T-cells or B-cells. It has been shown that NKG2 represents a family of related cDNA clones, designated NKG2A, NKG2B, NKG2C, and NKG2D, which encode type 2 integral membrane proteins (extracellular C-terminus) containing a C-type lectin domain. NKG2 plays a role as a receptor for the recognition of MHC class I HLA-E molecules by NK cells and some cytotoxic T-cells. NKG2A and NKG2B have been given the designation CD159a in the nomenclature of CD antigens.

### Note

For Research Use Only , Not for Diagnostic Use.