

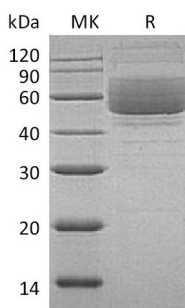
Product Name: Recombinant Human Mucin-1 (C-Fc)
Catalog #: PHH1181



Summary

Name	Mucin-1/MUC-1/MUC1
Purity	Greater than 95% as determined by reducing SDS-PAGE
Endotoxin level	<1 EU/μg as determined by LAL test.
Construction	Recombinant Human Mucin-1 is produced by our Mammalian expression system and the target gene encoding Ala23-Gly167 is expressed with a human IgG1 Fc tag at the C-terminus.
Accession #	P15941-11
Host	Human Cells
Species	Human
Predicted Molecular Mass	42.3 KDa
Formulation	Lyophilized from a 0.2 μm filtered solution of PBS, pH 7.4.
Shipping	The product is shipped at ambient temperature. Upon receipt, store it immediately at the temperature listed below.
Stability&Storage	Store at ≤-70°C, stable for 6 months after receipt. Store at ≤-70°C, stable for 3 months under sterile conditions after opening. Please minimize freeze-thaw cycles.
Reconstitution	Always centrifuge tubes before opening. Do not mix by vortex or pipetting. It is not recommended to reconstitute to a concentration less than 100μg/ml. Dissolve the lyophilized protein in distilled water. Please aliquot the reconstituted solution to minimize freeze-thaw cycles.

SDS-PAGE image



Background

Product Name: Recombinant Human Mucin-1 (C-Fc)
Catalog #: PHH1181



Alternative Names

Mucin-1; MUC-1; Breast carcinoma-associated antigen DF3; Cancer antigen 15-3; CA 15-3; Carcinoma-associated mucin; Episialin; H23AG; Krebs von den Lungen-6; KL-6; PEMT; Peanut-reactive urinary mucin; PUM; Polymorphic epithelial mucin; PEM; Tumor-associated epithelial membrane antigen; EMA; Tumor-associated mucin; CD227; MUC1

Background

Mucin-1, is a membrane-bound protein that is a member of the mucin family. Mucins are O-glycosylated proteins that play an essential role in forming protective mucous barriers on epithelial surfaces. These proteins also play a role in intracellular signaling. This protein is expressed on the apical surface of epithelial cells that line the mucosal surfaces of many different tissues including lung, breast stomach and pancreas. MUC-1 exclusively located in the apical domain of the plasma membrane of highly polarized epithelial cells. MUC-1 can act both as an adhesion and an anti-adhesion protein. This protein may provide a protective layer on epithelial cells against bacterial and enzyme attack. MUC-1 participated in modulates signaling in ERK, SRC and NF-kappa-B pathways. In activated T-cells, MUC-1 influences directly or indirectly the Ras/MAPK pathway. MUC-1 promotes tumor progression and regulates TP53-mediated transcription and determines cell fate in the genotoxic stress response.

Note

For Research Use Only , Not for Diagnostic Use.