

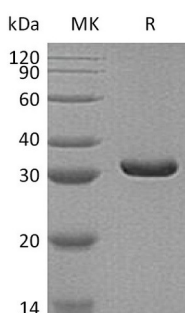
**Product Name: Recombinant Human MDH2 (C-6His)**  
**Catalog #: PHH1143**



## Summary

<b>Name</b>	MDH2/Malate dehydrogenase, mitochondrial
<b>Purity</b>	Greater than 95% as determined by reducing SDS-PAGE
<b>Endotoxin level</b>	<1 EU/μg as determined by LAL test.
<b>Construction</b>	Recombinant Human Malate Dehydrogenase, Mitochondrial is produced by our Mammalian expression system and the target gene encoding Ala25-Lys338 is expressed with a 6His tag at the C-terminus.
<b>Accession #</b>	P40926
<b>Host</b>	Human Cells
<b>Species</b>	Human
<b>Predicted Molecular Mass</b>	34 KDa
<b>Formulation</b>	Supplied as a 0.2 μm filtered solution of 20mM PB, 150mM NaCl, pH 7.4.
<b>Shipping</b>	The product is shipped on dry ice/polar packs. Upon receipt, store it immediately at the temperature listed below.
<b>Stability&amp;Storage</b>	Store at ≤-70°C, stable for 6 months after receipt. Store at ≤-70°C, stable for 3 months under sterile conditions after opening. Please minimize freeze-thaw cycles.
<b>Reconstitution</b>	

## SDS-PAGE image



## Background

<b>Alternative Names</b>	Malate dehydrogenase; mitochondrial; MDH2
<b>Background</b>	Malate dehydrogenase, mitochondrial is a 338 amino acids protein that belongs to the LDH/MDH superfamily. MDH type 1 family. MDH2 catalyzes the reversible

**Product Name: Recombinant Human MDH2 (C-6His)**  
**Catalog #: PHH1143**

---



oxidation of malate to oxaloacetate, utilizing the NAD/NADH cofactor system in the citric acid cycle. MDH2 is localized to the mitochondria and takes part in the malate-aspartate shuttle that functions in the metabolic coordination between cytosol and mitochondria. MDH2 is highly expressed in the adrenal system, small intestine, heart and pancreas.

### **Note**

For Research Use Only , Not for Diagnostic Use.