

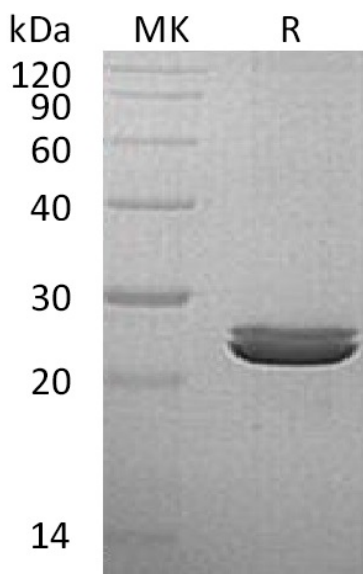
Product Name: Recombinant Human LYG2 (C-6His)
Catalog #: PHH1121



Summary

Name	Lysozyme g-like protein 2/LYG2
Purity	Greater than 95% as determined by reducing SDS-PAGE
Endotoxin level	<1 EU/μg as determined by LAL test.
Construction	Recombinant Human Lysozyme G-Like Protein 2 is produced by our Mammalian expression system and the target gene encoding Ser20-Phe212 is expressed with a 6His tag at the C-terminus.
Accession #	Q86SG7
Host	Human Cells
Species	Human
Predicted Molecular Mass	22.55 KDa
Formulation	Supplied as a 0.2 μm filtered solution of 20mM PB, 150mM NaCl, 10% Glycerol, pH 7.2.
Shipping	The product is shipped on dry ice/polar packs. Upon receipt, store it immediately at the temperature listed below.
Stability&Storage	Store at ≤-70°C, stable for 6 months after receipt. Store at ≤-70°C, stable for 3 months under sterile conditions after opening. Please minimize freeze-thaw cycles.
Reconstitution	

SDS-PAGE image



Product Name: Recombinant Human LYG2 (C-6His)
Catalog #: PHH1121



Alternative Names

Lysozyme G-Like Protein 2; LYG2; LYGH

Background

Lysozyme G-Like Protein 2 (LYG2) is a secreted protein that belongs to the glycosyl hydrolase 23 family. LYG2 contains one SLT domain, one protein domain present in bacterial lytic transglycosylase (SLT) and in eukaryotic lysozymes (GEWL). SLT domain catalyzes the cleavage of the β -1,4-glycosidic bond between N-acetylmuramic acid (MurNAc) and N-acetylglucosamine (GlcNAc). LYG2 has hydrolase activity which acting on glycosyl bonds, and possess lysozyme activity.

Note

For Research Use Only , Not for Diagnostic Use.