

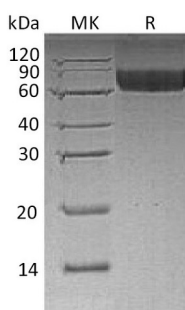
**Product Name: Recombinant Human LILRB2 (C-6His)**  
**Catalog #: PHH1082**



## Summary

<b>Name</b>	LILRB2/ILT4/CD85d/Lir-2/LIR2/MIR10/Leukocyte Ig-Like Receptor B2/Leukocyte Immunoglobulin-Like Receptor Subfamily B Member 2
<b>Purity</b>	Greater than 95% as determined by reducing SDS-PAGE
<b>Endotoxin level</b>	<1 EU/μg as determined by LAL test.
<b>Construction</b>	Recombinant Human Leukocyte Immunoglobulin-Like Receptor Subfamily B Member 2 is produced by our Mammalian expression system and the target gene encoding Gln22-His458 is expressed with a 6His tag at the C-terminus.
<b>Accession #</b>	AAH36827.1
<b>Host</b>	Human Cells
<b>Species</b>	Human
<b>Predicted Molecular Mass</b>	48.57 KDa
<b>Formulation</b>	Lyophilized from a 0.2 μm filtered solution of 20mM PB, 150mM NaCl, pH 7.2.
<b>Shipping</b>	The product is shipped at ambient temperature. Upon receipt, store it immediately at the temperature listed below.
<b>Stability&amp;Storage</b>	Store at ≤-70°C, stable for 6 months after receipt. Store at ≤-70°C, stable for 3 months under sterile conditions after opening. Please minimize freeze-thaw cycles.
<b>Reconstitution</b>	Always centrifuge tubes before opening. Do not mix by vortex or pipetting. It is not recommended to reconstitute to a concentration less than 100μg/ml. Dissolve the lyophilized protein in distilled water. Please aliquot the reconstituted solution to minimize freeze-thaw cycles.

## SDS-PAGE image



## Background

**Product Name: Recombinant Human LILRB2 (C-6His)**  
**Catalog #: PHH1082**

---



**Alternative Names**

Leukocyte Immunoglobulin-Like Receptor Subfamily B Member 2; LIR-2; Leukocyte Immunoglobulin-Like Receptor 2; CD85 Antigen-Like Family Member D; Immunoglobulin-Like Transcript 4; ILT-4; Monocyte/Macrophage Immunoglobulin-Like Receptor 10; MIR-10; CD85d; LILRB2; ILT4; LIR2; MIR10

**Background**

Members of the immunoglobulin-like transcript (ILT) family are activating and inhibitory immunoreceptors whose genes are located same locus that encodes killer cell Ig-like receptors (KIR). Leukocyte Immunoglobulin-Like Receptor Subfamily B Member 2 (LIR-2) is a type I transmembrane protein. LIR-2 is expressed primarily on monocytes and dendritic cells (DC). Human LIR-2 is produced as a 598 amino acid precursor including a 21 aa signal sequence, a 440 aa extracellular domain (ECD), a 21 aa transmembrane segment, and a 116 aa cytoplasmic domain. LIR-2 binds to Classical MHC I proteins. Ligation of LIR-2 includes Tyr phosphorylation within its cytoplasmic ITIMs, a requirement for association with SHP-1. LIR-2 mediates tolerogenic DC-induced CD4+ T cell energy in vitro and in vivo.

**Note**

For Research Use Only , Not for Diagnostic Use.