

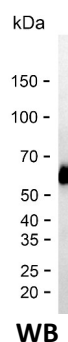
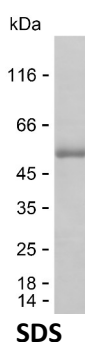
Product Name: Recombinant Human RPL37A Protein
Catalog #: PHH10737



Summary

Name	RL37A_HUMAN
Purity	Greater than 85% as determined by reducing SDS-PAGE
Endotoxin level	Please contact with the lab for this information
Tag	N-MBP & C-His
Accession #	P61513
Host	HEK293
Species	Human
Molecular Mass	53 kDa
Buffer	Phosphate buffered saline
Shipping	The product is shipped on dry ice/polar packs. Upon receipt, store it immediately at the temperature listed below.
Stability&Storage	Store at $\leq -70^{\circ}\text{C}$, stable for 6 months after receipt. Store at $\leq -70^{\circ}\text{C}$, stable for 3 months under sterile conditions after opening. Please minimize freeze-thaw cycles.
Sequence	MAKRTKKVGI VGKYGTRYGA SLRKMVKKIE ISQHAKYTCS FCGKTKMKRR AVGIWHCGSC MKTVAGGAWT YNTTSAVTVK SAIRRLKELK DQ

image



Background

Alternative Names 60S ribosomal protein L37a (Large ribosomal subunit protein eL43)

Note

For Research Use Only , Not for Diagnostic Use