

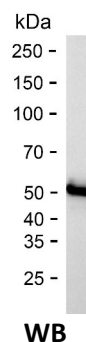
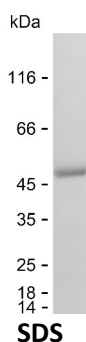
**Product Name: Recombinant Human HSPE1 Protein**  
**Catalog #: PHH10696**



## Summary

<b>Name</b>	CH10_HUMAN
<b>Purity</b>	Greater than 85% as determined by reducing SDS-PAGE
<b>Endotoxin level</b>	Please contact with the lab for this information
<b>Tag</b>	N-MBP & C-His
<b>Accession #</b>	P61604
<b>Host</b>	HEK293
<b>Species</b>	Human
<b>Molecular Mass</b>	53 kDa
<b>Buffer</b>	Phosphate buffered saline
<b>Shipping</b>	The product is shipped on dry ice/polar packs. Upon receipt, store it immediately at the temperature listed below.
<b>Stability&amp;Storage</b>	Store at $\leq -70^{\circ}\text{C}$ , stable for 6 months after receipt. Store at $\leq -70^{\circ}\text{C}$ , stable for 3 months under sterile conditions after opening. Please minimize freeze-thaw cycles.
<b>Sequence</b>	MAGQAFRKFL PLFDRVLVER SAAETVTKGG IMLPEKSQ GK VLQATVVAVG SGSKGKGGEI QPVSVKVGDK VLLPEYGGTK VVLDDKDYFL FRDGDILGKY VD

## image



## Background

<b>Alternative Names</b>	10 kDa heat shock protein, mitochondrial (Hsp10) (10 kDa chaperonin) (Chaperonin 10) (CPN10) (Early-pregnancy factor) (EPF)
--------------------------	---

## Note

For Research Use Only , Not for Diagnostic Use