

**Product Name: Recombinant Human LAG-3 (C-6His)**  
**Catalog #: PHH1059**



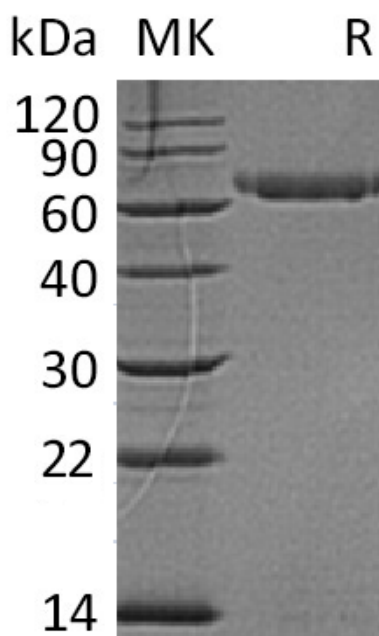
---

## Summary

<b>Name</b>	LAG-3/CD223/Lymphocyte activation gene 3 Protein
<b>Purity</b>	Greater than 95% as determined by reducing SDS-PAGE
<b>Endotoxin level</b>	<1 EU/μg as determined by LAL test.
<b>Construction</b>	Recombinant Human Lymphocyte Activation Gene 3 Protein is produced by our Mammalian expression system and the target gene encoding Leu23-Leu450 is expressed with a 6His tag at the C-terminus.
<b>Accession #</b>	P18627
<b>Host</b>	Human Cells
<b>Species</b>	Human
<b>Predicted Molecular Mass</b>	47.2 KDa
<b>Formulation</b>	Lyophilized from a 0.2 μm filtered solution of PBS, 2mM EDTA, pH7.4.
<b>Shipping</b>	The product is shipped at ambient temperature. Upon receipt, store it immediately at the temperature listed below.
<b>Stability&amp;Storage</b>	Lyophilized protein should be stored at ≤ -20°C, stable for one year after receipt. Reconstituted protein solution can be stored at 2-8°C for 2-7 days. Aliquots of reconstituted samples are stable at ≤ -20°C for 3 months.
<b>Reconstitution</b>	Always centrifuge tubes before opening. Do not mix by vortex or pipetting. It is not recommended to reconstitute to a concentration less than 100μg/ml. Dissolve the lyophilized protein in distilled water. Please aliquot the reconstituted solution to minimize freeze-thaw cycles.

## SDS-PAGE image

**Product Name: Recombinant Human LAG-3 (C-6His)**  
**Catalog #: PHH1059**



### **Alternative Names**

Lymphocyte activation gene 3 protein; LAG3; LAG-3; Protein FDC; CD223

### **Background**

Human Lymphocyte activation gene 3 protein( LAG3) is a member of immunoglobulin (Ig) superfamily. LAG3 contains 4 extracellular Ig-like domains. The LAG3 gene contains 8 exons. LAG3 is involved in lymphocyte activation and can bind to HLA class-II antigens. It is selectively expressed in activated T and NK cells. LAG3 has a negative regulatory function in T cells and acts as a new marker of T cell induced B cell activation. As a soluble molecule, LAG3 activates antigen-presenting cells through MHC class II signaling. It can lead to increased antigen-specific T-cell responses in vivo. LAG-3 has higher affinity to MHC class II than CD4.

### **Note**

For Research Use Only , Not for Diagnostic Use.