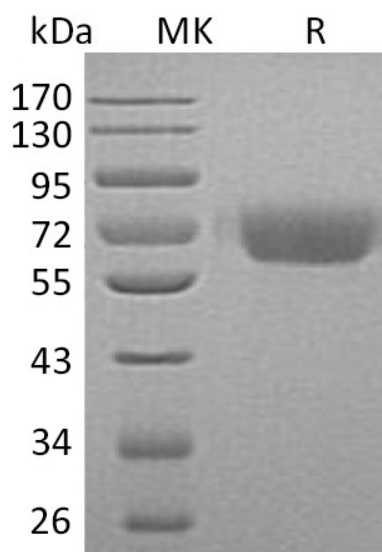


Summary

Name	Kininogen
Purity	Greater than 95% as determined by reducing SDS-PAGE
Endotoxin level	<1 EU/μg as determined by LAL test.
Construction	Recombinant Human Kininogen-1 is produced by our Mammalian expression system and the target gene encoding Gln19-Ser427 is expressed with a 6His tag at the C-terminus.
Accession #	P01042-2
Host	Human Cells
Species	Human
Predicted Molecular Mass	46.89 KDa
Formulation	Lyophilized from a 0.2 μm filtered solution of 20mM Hac-NaAC, 150mM NaCl, pH 4.0.
Shipping	The product is shipped at ambient temperature. Upon receipt, store it immediately at the temperature listed below.
Stability&Storage	Store at ≤-70°C, stable for 6 months after receipt. Store at ≤-70°C, stable for 3 months under sterile conditions after opening. Please minimize freeze-thaw cycles.
Reconstitution	Always centrifuge tubes before opening. Do not mix by vortex or pipetting. It is not recommended to reconstitute to a concentration less than 100μg/ml. Dissolve the lyophilized protein in distilled water. Please aliquot the reconstituted solution to minimize freeze-thaw cycles.

SDS-PAGE image

Product Name: Recombinant Human KNG1 (C-6His)
Catalog #: PHH1047



Alternative Names

Kininogen-1; Ipha-2-Thiol Proteinase Inhibitor; Fitzgerald Factor; High Molecular Weight Kininogen; HMWK; Williams-Fitzgerald-Flaujeac Factor; KNG1; BDK; KNG

Background

Kininogen-1 is a secreted protein which contains three cystatin domains. There are two alternatively spliced forms, designated as the high molecular weight (HMW) and low MW (LMW) forms. Kininogen-1 plays a critical role in blood coagulation and inflammatory response. Kininogens are inhibitors of thiol proteases. Kininogen-1 participates in blood coagulation by helping to position optimally prekallikrein and factor XI next to factor XII, also inhibits the thrombin- and plasmin-induced aggregation of thrombocytes. The active peptide bradykinin that is released from Kininogen-1 shows a variety of physiological effects: influence in smooth muscle contraction, induction of hypotension, natriuresis and diuresis, decrease in blood glucose level. It is a mediator of inflammation and causes increase in vascular permeability, stimulation of nociceptors release of other mediators of inflammation. It has a cardioprotective effect. LMW-kininogen inhibits the aggregation of thrombocytes and doesn't involved in blood clotting.

Note

For Research Use Only , Not for Diagnostic Use.