

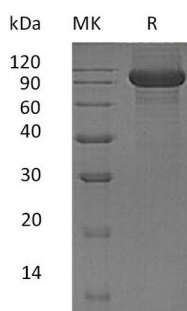
**Product Name: Recombinant Human Kell (C-6His)**  
**Catalog #: PHH1044**



## Summary

<b>Name</b>	Kelch-like protein 41/KEL
<b>Purity</b>	Greater than 95% as determined by reducing SDS-PAGE
<b>Endotoxin level</b>	<1 EU/μg as determined by LAL test.
<b>Construction</b>	Recombinant Human Kelch-like Protein 41 is produced by our Mammalian expression system and the target gene encoding Asn68-Trp732 is expressed with a 6His tag at the C-terminus.
<b>Accession #</b>	P23276
<b>Host</b>	Human Cells
<b>Species</b>	Human
<b>Predicted Molecular Mass</b>	76.4 KDa
<b>Formulation</b>	Supplied as a 0.2 μm filtered solution of 20mM PB, 150mM NaCl, pH 7.4.
<b>Shipping</b>	The product is shipped on dry ice/polar packs. Upon receipt, store it immediately at the temperature listed below.
<b>Stability&amp;Storage</b>	Store at ≤-70°C, stable for 6 months after receipt. Store at ≤-70°C, stable for 3 months under sterile conditions after opening. Please minimize freeze-thaw cycles.
<b>Reconstitution</b>	

## SDS-PAGE image



## Background

<b>Alternative Names</b>	Kell blood group glycoprotein; CD238; KEL
<b>Background</b>	Kell blood group glycoprotein (KEL) is a single-pass type II membrane protein which belongs to the peptidase M13 family. It is expressed in Expressed at high

**Product Name: Recombinant Human Kell (C-6His)**  
**Catalog #: PHH1044**

---



levels in erythrocytes and testis, and, at lower levels, in skeletal muscle, tonsils, lymph node, spleen and appendix. KEL has been shown zinc endopeptidase with endothelin-3-converting enzyme activity. It cleaves EDN1, EDN2 and EDN3, with a marked preference for EDN3. It links via a single disulfide bond to the XK membrane protein that carries the Kx antigen.

### **Note**

For Research Use Only , Not for Diagnostic Use.