

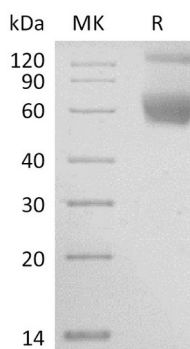
Product Name: Recombinant Human Serpin A4 (C-6His)
Catalog #: PHH1042



Summary

Name	Kallistatin/Serpin A4
Purity	Greater than 95% as determined by reducing SDS-PAGE
Endotoxin level	<1 EU/μg as determined by LAL test.
Construction	Recombinant Human Serine Protease Inhibitor-clade A4 is produced by our Mammalian expression system and the target gene encoding Gln21-Pro427 is expressed with a 6His tag at the C-terminus.
Accession #	P29622
Host	Human Cells
Species	Human
Predicted Molecular Mass	47.1 KDa
Formulation	Lyophilized from a 0.2 μm filtered solution of 20mM PB, 6% Trehalose, 4% Mannitol, 50mM NaCl, 0.05% Tween 80, pH6.0.
Shipping	The product is shipped at ambient temperature. Upon receipt, store it immediately at the temperature listed below.
Stability&Storage	Store at ≤-70°C, stable for 6 months after receipt. Store at ≤-70°C, stable for 3 months under sterile conditions after opening. Please minimize freeze-thaw cycles.
Reconstitution	Always centrifuge tubes before opening. Do not mix by vortex or pipetting. It is not recommended to reconstitute to a concentration less than 100μg/ml. Dissolve the lyophilized protein in distilled water. Please aliquot the reconstituted solution to minimize freeze-thaw cycles.

SDS-PAGE image



Product Name: Recombinant Human Serpin A4 (C-6His)
Catalog #: PHH1042



Background

Alternative Names	Kallistatin; Kallikrein Inhibitor; Peptidase Inhibitor 4; PI-4; Serpin A4; SERPINA4; KST; PI4
Background	Serpin Peptidase Inhibitor, Clade A (α -1 Antiproteinase, Antitrypsin), Member 4 (Serpin A4) is a member of the Serpin family. Serpin A4 exists as a monomer and some homodimers. Serpin A4 is expressed by the liver and secreted in plasma. Serpin A4 is a regulator of vascular homeostasis capable of controlling a wide spectrum of biological actions in the cardiovascular and renal systems. It can inhibit intracellular reactive oxygen species formation in cultured cardiac and renal cells. In addition, Serpin A4 has anti-inflammatory effect. Heparin blocks kallistatins complex formation with tissue kallikrein and abolishes its inhibitory effect on tissue kallikreins activity.

Note

For Research Use Only , Not for Diagnostic Use.