

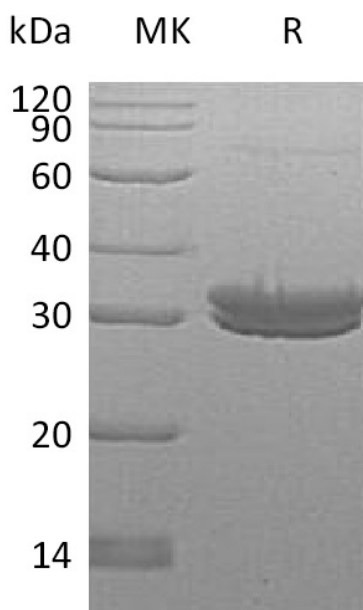
**Product Name: Recombinant Human KLK7 (C-6His)**  
**Catalog #: PHH1039**



## Summary

<b>Name</b>	Kallikrein 7/KLK7
<b>Purity</b>	Greater than 95% as determined by reducing SDS-PAGE
<b>Endotoxin level</b>	<1 EU/μg as determined by LAL test.
<b>Construction</b>	Recombinant Human Kallikrein 7 is produced by our Mammalian expression system and the target gene encoding Glu23-His252 is expressed with a 6His tag at the C-terminus.
<b>Accession #</b>	AAH32005
<b>Host</b>	Human Cells
<b>Species</b>	Human
<b>Predicted Molecular Mass</b>	26.17 KDa
<b>Formulation</b>	Supplied as a 0.2 μm filtered solution of 20mM HEPES, 150mM NaCl, pH 7.5.
<b>Shipping</b>	The product is shipped on dry ice/polar packs. Upon receipt, store it immediately at the temperature listed below.
<b>Stability&amp;Storage</b>	Store at ≤-70°C, stable for 6 months after receipt. Store at ≤-70°C, stable for 3 months under sterile conditions after opening. Please minimize freeze-thaw cycles.
<b>Reconstitution</b>	

## SDS-PAGE image



**Product Name: Recombinant Human KLK7 (C-6His)**  
**Catalog #: PHH1039**

---



### **Alternative Names**

Kallikrein-7; hK7; Serine Protease 6; Stratum Corneum Chymotryptic Enzyme; hSCCE; KLK7; PRSS6; SCCE

### **Background**

Human Kallikrein 7 is a member of the tissue kallikrein family of extracellular serine proteases that is made up of 15 members. It is predominantly expressed in the skin. A major physiological function of Kallikrein 7 is to regulate the desquamation process (the shedding of corneocytes from the outer layer of the epidermis) through proteolysis of the intercellular adhesive structures between corneocytes. Dysregulation of Kallikrein 7 has been linked to several inflammatory skin diseases including atopic dermatitis, psoriasis, and Netherton syndrome. Studies have shown that Kallikrein 5 is a potential physiological activator for Kallikrein 7. The proform of Kallikrein 7 can be activated by thermolysin.

### **Note**

For Research Use Only , Not for Diagnostic Use.