

**Product Name: Recombinant Human ST2 (C-6His)**  
**Catalog #: PHH0980**



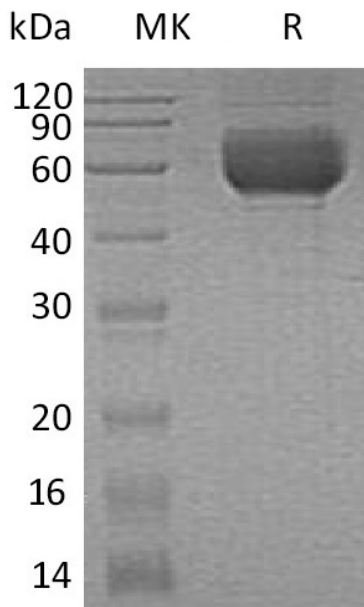
---

## Summary

<b>Name</b>	sST2/IL-33 R/Interleukin-1 receptor-like 1/IL-1RL1/DER4
<b>Purity</b>	Greater than 95% as determined by reducing SDS-PAGE
<b>Endotoxin level</b>	<1 EU/μg as determined by LAL test.
<b>Construction</b>	Recombinant Human Interleukin-1 Receptor-like 1 is produced by our Mammalian expression system and the target gene encoding Lys19-Phe328 is expressed with a 6His tag at the C-terminus.
<b>Accession #</b>	Q01638-2
<b>Host</b>	Human Cells
<b>Species</b>	Human
<b>Predicted Molecular Mass</b>	36 KDa
<b>Formulation</b>	Lyophilized from a 0.2 μm filtered solution of 20mM PB, 150mM NaCl, pH 7.4.
<b>Shipping</b>	The product is shipped at ambient temperature. Upon receipt, store it immediately at the temperature listed below.
<b>Stability&amp;Storage</b>	Lyophilized protein should be stored at ≤ -20°C, stable for one year after receipt. Reconstituted protein solution can be stored at 2-8°C for 2-7 days. Aliquots of reconstituted samples are stable at ≤ -20°C for 3 months.
<b>Reconstitution</b>	Always centrifuge tubes before opening. Do not mix by vortex or pipetting. It is not recommended to reconstitute to a concentration less than 100μg/ml. Dissolve the lyophilized protein in distilled water. Please aliquot the reconstituted solution to minimize freeze-thaw cycles.

## SDS-PAGE image

**Product Name: Recombinant Human ST2 (C-6His)**  
**Catalog #: PHH0980**



### Alternative Names

Interleukin-1 receptor-like 1;Protein ST2;DER4; ST2; T1

### Background

Interleukin 1 receptor-like 1(IL1RL1) is a member of the interleukin-1 receptor family, Contains 3 Ig-like C2-type domains and 1 TIR domain. It is highly expressed in kidney, lung, placenta, stomach, skeletal muscle, colon and small intestine. IL1RL1 is a receptor for interleukin-33, its stimulation recruits MYD88, IRAK1, IRAK4, and TRAF6, followed by phosphorylation of MAPK3/ERK1 and/or MAPK1/ERK2, MAPK14, and MAPK8. IL1RL1 may possibly be involved in helper T-cell function. Soluble IL1RL1 also acts as a negative regulator of Th2 cytokine production, it directly implicated in the progression of cardiac disease.

### Note

For Research Use Only , Not for Diagnostic Use.