

Product Name: Recombinant Human INSL3 (C-6His)
Catalog #: PHH0956

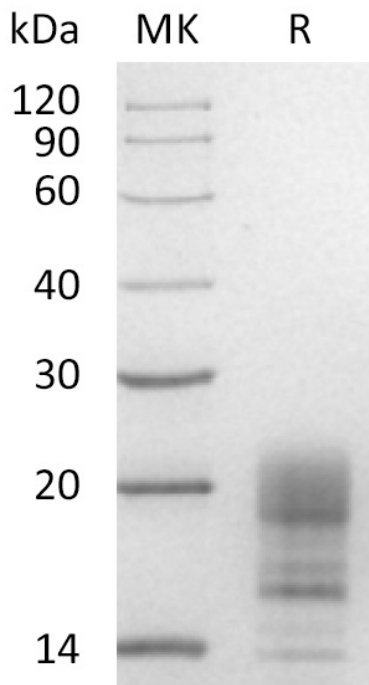


Summary

Name	INSL3/Insulin-like 3
Purity	Greater than 95% as determined by reducing SDS-PAGE
Endotoxin level	<1 EU/μg as determined by LAL test.
Construction	Recombinant Human Insulin-like 3 is produced by our Mammalian expression system and the target gene encoding Leu21-Tyr131 is expressed with a 6His tag at the C-terminus.
Accession #	AAI06722.1
Host	Human Cells
Species	Human
Predicted Molecular Mass	13.4 KDa
Formulation	Lyophilized from a 0.2 μm filtered solution of 20mM PB, 150mM NaCl, pH 7.4.
Shipping	The product is shipped at ambient temperature. Upon receipt, store it immediately at the temperature listed below.
Stability&Storage	Lyophilized protein should be stored at ≤ -20°C, stable for one year after receipt. Reconstituted protein solution can be stored at 2-8°C for 2-7 days. Aliquots of reconstituted samples are stable at ≤ -20°C for 3 months.
Reconstitution	Always centrifuge tubes before opening. Do not mix by vortex or pipetting. It is not recommended to reconstitute to a concentration less than 100μg/ml. Dissolve the lyophilized protein in distilled water. Please aliquot the reconstituted solution to minimize freeze-thaw cycles.

SDS-PAGE image

Product Name: Recombinant Human INSL3 (C-6His)
Catalog #: PHH0956



Alternative Names

Insulin-like 3; Leydig insulin-like peptide; Relaxin-like factor; INSL3; RLF; RLNL

Background

Insulin-like 3 is a protein that in humans is encoded by the INSL3 gene. It is a secreted protein that belongs to the insulin family. It is expressed in prenatal and postnatal Leydig cells and found as well in the corpus luteum, trophoblast, fetal membranes and breast. It may act as a hormone to regulate growth and differentiation of gubernaculum, and thus mediating intra-abdominal testicular descent. It is a ligand for LGR8 receptor.

Note

For Research Use Only , Not for Diagnostic Use.