

**Product Name: Recombinant Human INPP1 (C-6His)**  
**Catalog #: PHH0954**

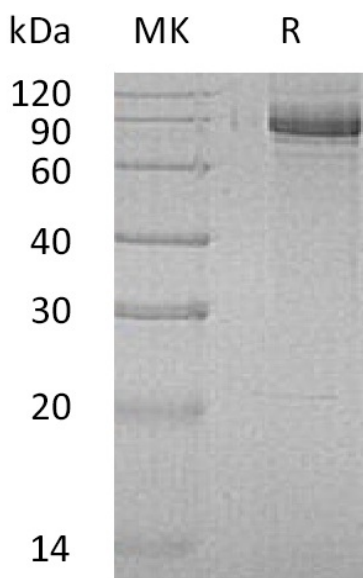


## Summary

<b>Name</b>	INPP1/Inositol polyphosphate 1-phosphatase
<b>Purity</b>	Greater than 95% as determined by reducing SDS-PAGE
<b>Endotoxin level</b>	<1 EU/μg as determined by LAL test.
<b>Construction</b>	Recombinant Human Inositol Polyphosphate 1-Phosphatase is produced by our Mammalian expression system and the target gene encoding Met1-Thr399 is expressed with a 6His tag at the C-terminus.
<b>Accession #</b>	P49441
<b>Host</b>	Human Cells
<b>Species</b>	Human
<b>Predicted Molecular Mass</b>	45 KDa
<b>Formulation</b>	Lyophilized from a 0.2 μm filtered solution of 20mM PB, 150mM NaCl, 1mM EDTA, 5% Trehalose, pH 7.4.
<b>Shipping</b>	The product is shipped at ambient temperature. Upon receipt, store it immediately at the temperature listed below.
<b>Stability&amp;Storage</b>	Store at ≤-70°C, stable for 6 months after receipt. Store at ≤-70°C, stable for 3 months under sterile conditions after opening. Please minimize freeze-thaw cycles.
<b>Reconstitution</b>	Always centrifuge tubes before opening. Do not mix by vortex or pipetting. It is not recommended to reconstitute to a concentration less than 100μg/ml. Dissolve the lyophilized protein in distilled water. Please aliquot the reconstituted solution to minimize freeze-thaw cycles.

## SDS-PAGE image

**Product Name: Recombinant Human INPP1 (C-6His)**  
**Catalog #: PHH0954**



### Alternative Names

Inositol Polyphosphate 1-Phosphatase; IPP; IPPase; INPP1

### Background

Inositol Polyphosphate 1-Phosphatase (INPP1) is a member of the inositol monophosphatase family. INPP1 is widely expressed in tissues, with highest expression levels observed in the pancreas and kidney. INPP1 is inhibited by  $\text{Li}^+$ . Removing the phosphate group at position 1 of the inositol ring from the polyphosphates inositol 1,4-bisphosphate and inositol 1,3,4-trisphosphosphate. INPP1 is involved in signal transduction and phosphatidylinositol signaling pathway.

### Note

For Research Use Only , Not for Diagnostic Use.