

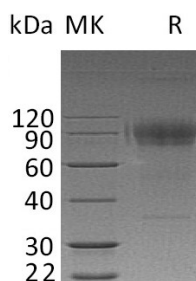
Product Name: Recombinant Human IL-2RG (C-Fc)
Catalog #: PHH0918



Summary

Name	IL-2 R gamma/IL-2RG/CD132/Common gamma Chain
Purity	Greater than 95% as determined by reducing SDS-PAGE
Endotoxin level	<1 EU/μg as determined by LAL test.
Construction	Recombinant Human Cytokine Receptor Common Subunit Gamma is produced by our Mammalian expression system and the target gene encoding Leu23-Ala262 is expressed with a human IgG1 Fc tag at the C-terminus.
Accession #	P31785
Host	Human Cells
Species	Human
Predicted Molecular Mass	55.4 KDa
Formulation	Lyophilized from a 0.2 μm filtered solution of PBS, pH 7.4.
Shipping	The product is shipped at ambient temperature. Upon receipt, store it immediately at the temperature listed below.
Stability&Storage	Lyophilized protein should be stored at ≤ -20°C, stable for one year after receipt. Reconstituted protein solution can be stored at 2-8°C for 2-7 days. Aliquots of reconstituted samples are stable at ≤ -20°C for 3 months.
Reconstitution	Always centrifuge tubes before opening. Do not mix by vortex or pipetting. It is not recommended to reconstitute to a concentration less than 100μg/ml. Dissolve the lyophilized protein in distilled water. Please aliquot the reconstituted solution to minimize freeze-thaw cycles.

SDS-PAGE image



Background

Product Name: Recombinant Human IL-2RG (C-Fc)
Catalog #: PHH0918



Alternative Names

Cytokine receptor common subunit gamma; IL2RG; Interleukin-2 receptor subunit gamma; IL-2 receptor subunit gamma; IL-2R subunit gamma; gammaC

Background

IL2RG contains one fibronectin type-III domain. IL2RG is an important signaling component of many interleukin receptors, including those of interleukin -2, -4, -7 and -21, and is thus referred to as the common gamma chain. IL2RG interacts with SHB upon interleukin stimulation and HTLV-1 accessory protein p12l. Defects in IL2RG are the cause of X-linked combined immunodeficiency (XCID) and severe combined immunodeficiency X-linked T-cell-negative /B-cell-positive / NK-cell-negative (XSCID).

Note

For Research Use Only , Not for Diagnostic Use.