

Product Name: Recombinant Human IL-23R (C-6His)
Catalog #: PHH0910

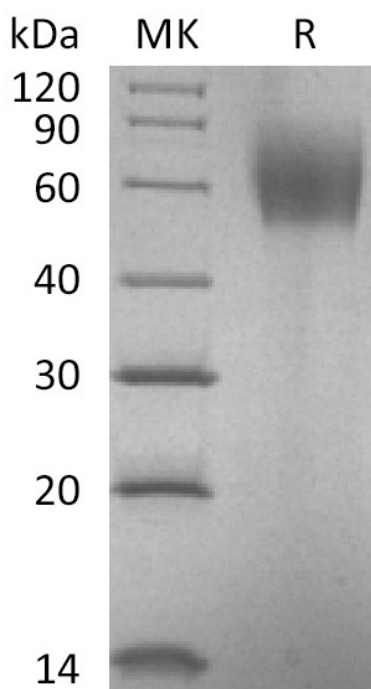


Summary

Name	IL-23 Recetor/IL-23R
Purity	Greater than 95% as determined by reducing SDS-PAGE
Endotoxin level	<1 EU/μg as determined by LAL test.
Construction	Recombinant Human Interleukin-23 Receptor is produced by our Mammalian expression system and the target gene encoding Gly24-Asp353 is expressed with a 6His tag at the C-terminus.
Accession #	AAM44229.1
Host	Human Cells
Species	Human
Predicted Molecular Mass	38.7 KDa
Formulation	Lyophilized from a 0.2 μm filtered solution of PBS, pH 7.4.
Shipping	The product is shipped at ambient temperature. Upon receipt, store it immediately at the temperature listed below.
Stability&Storage	Store at ≤-70°C, stable for 6 months after receipt. Store at ≤-70°C, stable for 3 months under sterile conditions after opening. Please minimize freeze-thaw cycles.
Reconstitution	Always centrifuge tubes before opening. Do not mix by vortex or pipetting. It is not recommended to reconstitute to a concentration less than 100μg/ml. Dissolve the lyophilized protein in distilled water. Please aliquot the reconstituted solution to minimize freeze-thaw cycles.

SDS-PAGE image

Product Name: Recombinant Human IL-23R (C-6His)
Catalog #: PHH0910



Alternative Names

Interleukin-23 receptor; IL23R; IL-23 receptor; IL-23R

Background

Interleukin 23 receptor (IL23R) is a type I cytokine receptor for IL23. IL23 receptor complex is comprised of two subunits, the IL12R β 1 subunit, which is shared with several cytokines, and a subunit that is unique to IL-23. IL23, after binding to IL23R, activates memory T cells and mediates pro-inflammatory activities in part by the production of IL17 through activation of TH17 lymphocytes. IL23R is expressed on T cells, NK cells, dendritic cells, and macrophages. In fact, polymorphisms of the IL23R gene were reported to be associated with susceptibility to inflammatory diseases and autoimmune diseases such as psoriasis, multiple sclerosis, Graves ophtalmopathy and inflammatory bowel diseases. The IL23R is known to be critically involved in the carcinogenesis of different malignant tumor.

Note

For Research Use Only , Not for Diagnostic Use.