

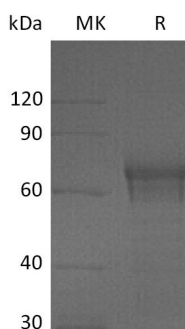
**Product Name: Recombinant Human IL-15RA (C-Fc)**  
**Catalog #: PHH0871**



## Summary

<b>Name</b>	IL-15 R alpha/IL-15R $\alpha$ /IL-15RA/Interleukin-15 receptor subunit alpha
<b>Purity</b>	Greater than 95% as determined by reducing SDS-PAGE
<b>Endotoxin level</b>	<1 EU/ $\mu$ g as determined by LAL test.
<b>Construction</b>	Recombinant Human Interleukin-15 Receptor Subunit Alpha is produced by our Mammalian expression system and the target gene encoding Ile31-Thr172 is expressed with a human IgG1 Fc tag at the C-terminus.
<b>Accession #</b>	Q13261-3
<b>Host</b>	Human Cells
<b>Species</b>	Human
<b>Predicted Molecular Mass</b>	42.2 KDa
<b>Formulation</b>	Lyophilized from a 0.2 $\mu$ m filtered solution of 20mM PB, 150mM NaCl, pH 7.4.
<b>Shipping</b>	The product is shipped at ambient temperature. Upon receipt, store it immediately at the temperature listed below.
<b>Stability&amp;Storage</b>	Lyophilized protein should be stored at $\leq -20^{\circ}\text{C}$ , stable for one year after receipt. Reconstituted protein solution can be stored at 2-8 $^{\circ}\text{C}$ for 2-7 days. Aliquots of reconstituted samples are stable at $\leq -20^{\circ}\text{C}$ for 3 months.
<b>Reconstitution</b>	Always centrifuge tubes before opening. Do not mix by vortex or pipetting. It is not recommended to reconstitute to a concentration less than 100 $\mu$ g/ml. Dissolve the lyophilized protein in distilled water. Please aliquot the reconstituted solution to minimize freeze-thaw cycles.

## SDS-PAGE image



## Background

**Product Name: Recombinant Human IL-15RA (C-Fc)**  
**Catalog #: PHH0871**

---



**Alternative Names**

CD215; IL15RA; CD215 antigen; IL-15 receptor subunit alpha; IL-15RA; IL-15R-alpha; interleukin 15 receptor; alpha; interleukin-15 receptor subunit alpha; MGC104179

**Background**

Interleukin 15 Receptor alpha (IL-15R $\alpha$ ) is a transmembrane glycoprotein that plays a pleiotropic role in immune development and function, including the positive maintenance of lymphocyte homeostasis. IL-15R $\alpha$  chain can bind soluble IL-15 and "transpresent" cytokine to the cells, allowing them to respond to IL-15. Soluble IL-15R $\alpha$  can function as a specific high-affinity IL-15 antagonist. The soluble IL-15/IL-15R $\alpha$  complexes exhibit a strong agonistic activity which is mediated through membrane-bound IL-15 receptor  $\beta$  and  $\gamma$  heterodimers and enables signaling to cells.

**Note**

For Research Use Only , Not for Diagnostic Use.