

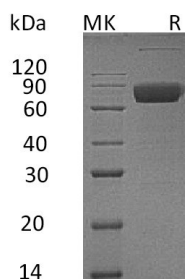
Product Name: Recombinant Human IL-10RB (C-Fc)
Catalog #: PHH0860



Summary

Name	IL-10RB/Interleukin-10 receptor subunit beta
Purity	Greater than 95% as determined by reducing SDS-PAGE
Endotoxin level	<1 EU/μg as determined by LAL test.
Construction	Recombinant Human Interleukin-10 Receptor Subunit Beta is produced by our Mammalian expression system and the target gene encoding Met20-Ser220 is expressed with a human IgG1 Fc tag at the C-terminus.
Accession #	Q08334
Host	Human Cells
Species	Human
Predicted Molecular Mass	50.6 KDa
Formulation	Lyophilized from a 0.2 μm filtered solution of PBS, pH 7.4.
Shipping	The product is shipped at ambient temperature. Upon receipt, store it immediately at the temperature listed below.
Stability&Storage	Lyophilized protein should be stored at ≤ -20°C, stable for one year after receipt. Reconstituted protein solution can be stored at 2-8°C for 2-7 days. Aliquots of reconstituted samples are stable at ≤ -20°C for 3 months.
Reconstitution	Always centrifuge tubes before opening. Do not mix by vortex or pipetting. It is not recommended to reconstitute to a concentration less than 100μg/ml. Dissolve the lyophilized protein in distilled water. Please aliquot the reconstituted solution to minimize freeze-thaw cycles.

SDS-PAGE image



Background

Product Name: Recombinant Human IL-10RB (C-Fc)
Catalog #: PHH0860



Alternative Names

Interleukin-10 receptor subunit beta(IL10RB);Cytokine receptor class-II member 4;Cytokine receptor family 2 member 4;Interleukin-10 receptor subunit 2;

Background

Interleukin-10 receptor subunit beta(IL10RB), also known as Cytokine receptor class-II member 4,Cytokine receptor family 2 member 4,Interleukin-10 receptor subunit 2, belongs to the type II cytokine receptor family. IL10RB is a single- pass type I membrane protein and contains two fibronectin type-III domains. It is an accessory chain which is essential for the active interleukin 10 receptor complex. Coexpression of IL10RB and IL10RA proteins has been shown to be required for IL10-induced signal transduction. Defects in IL10RB are the cause of inflammatory bowel disease type 25 (IBD25) which is a chronic, relapsing inflammation of the gastrointestinal tract with a complex etiology.

Note

For Research Use Only , Not for Diagnostic Use.