

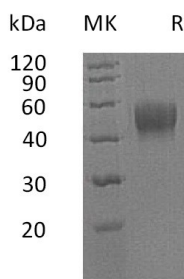
**Product Name: Recombinant Human IL-10RB (C-6His)**  
**Catalog #: PHH0859**



## Summary

<b>Name</b>	IL-10RB/Interleukin-10 receptor subunit beta
<b>Purity</b>	Greater than 95% as determined by reducing SDS-PAGE
<b>Endotoxin level</b>	<1 EU/μg as determined by LAL test.
<b>Construction</b>	Recombinant Human Interleukin-10 Receptor Subunit Beta is produced by our Mammalian expression system and the target gene encoding Met20-Ser220 is expressed with a 6His tag at the C-terminus.
<b>Accession #</b>	Q08334
<b>Host</b>	Human Cells
<b>Species</b>	Human
<b>Predicted Molecular Mass</b>	24.5 KDa
<b>Formulation</b>	Lyophilized from a 0.2 μm filtered solution of 20mM PB, 150mM NaCl, pH 7.4.
<b>Shipping</b>	The product is shipped at ambient temperature. Upon receipt, store it immediately at the temperature listed below.
<b>Stability&amp;Storage</b>	Lyophilized protein should be stored at ≤ -20°C, stable for one year after receipt. Reconstituted protein solution can be stored at 2-8°C for 2-7 days. Aliquots of reconstituted samples are stable at ≤ -20°C for 3 months.
<b>Reconstitution</b>	Always centrifuge tubes before opening. Do not mix by vortex or pipetting. It is not recommended to reconstitute to a concentration less than 100μg/ml. Dissolve the lyophilized protein in distilled water. Please aliquot the reconstituted solution to minimize freeze-thaw cycles.

## SDS-PAGE image



## Background

**Product Name: Recombinant Human IL-10RB (C-6His)**  
**Catalog #: PHH0859**



---

**Alternative Names**

Interleukin-10 receptor subunit beta(IL10RB);Cytokine receptor class-II member 4;Cytokine receptor family 2 member 4;Interleukin-10 receptor subunit 2

**Background**

IL10RB is a single- pass type I membrane protein and contains two fibronectin type-III domains. It is an accessory chain which is essential for the active interleukin 10 receptor complex. Coexpression of IL10RB and IL10RA proteins has been shown to be required for IL10-induced signal transduction. Defects in IL10RB are the cause of inflammatory bowel disease type 25 (IBD25) which is a chronic, relapsing inflammation of the gastrointestinal tract with a complex etiology.

**Note**

For Research Use Only , Not for Diagnostic Use.