

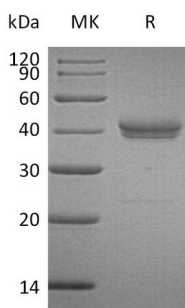
Product Name: Recombinant Human CADM3 (C-6His)
Catalog #: PHH0855



Summary

Name	CADM3/IGSF4B/SynCAM3
Purity	Greater than 95% as determined by reducing SDS-PAGE
Endotoxin level	<1 EU/μg as determined by LAL test.
Construction	Recombinant Human Cell Adhesion Molecule 3 is produced by our Mammalian expression system and the target gene encoding Asn25-His330 is expressed with a 6His tag at the C-terminus.
Accession #	Q8N126
Host	Human Cells
Species	Human
Predicted Molecular Mass	34.68 KDa
Formulation	Lyophilized from a 0.2 μm filtered solution of 20mM PB, 150mM NaCl, pH 7.2.
Shipping	The product is shipped at ambient temperature. Upon receipt, store it immediately at the temperature listed below.
Stability&Storage	Store at ≤-70°C, stable for 6 months after receipt. Store at ≤-70°C, stable for 3 months under sterile conditions after opening. Please minimize freeze-thaw cycles.
Reconstitution	Always centrifuge tubes before opening. Do not mix by vortex or pipetting. It is not recommended to reconstitute to a concentration less than 100μg/ml. Dissolve the lyophilized protein in distilled water. Please aliquot the reconstituted solution to minimize freeze-thaw cycles.

SDS-PAGE image



Background

Product Name: Recombinant Human CADM3 (C-6His)
Catalog #: PHH0855



Alternative Names

Cell Adhesion Molecule 3; Brain Immunoglobulin Receptor; Immunoglobulin Superfamily Member 4B; IgSF4B; Nectin-Like Protein 1; NECL-1; Synaptic Cell Adhesion Molecule 3; SynCAM3; TSLC1-Like Protein 1; TSLL1; CADM3; IGSF4B; NECL1; SYNCAM3; TSLL1

Background

Cell Adhesion Molecular Proteins are proteins located on the cell surface involved with the binding with other cells or with the extracellular matrix in the cell adhesion process. These proteins consists of three domains, an transmembrane domain, an intracellular domain that interacts with the cytoskeleton, and an extracellular domain that interacts with other CAMs of the same kind or with other CAMs or the extracellular matrix. Cell Adhesion Molecular 3 (CADM3) is a neural tissue-specific member of the nectin-like family of immunoglobulin superfamily. CADM3 interacts with EPB41L1 may regulate structure or function of cell-cell junctions. CADM3 has both calcium-independent homophilic cell-cell adhesion activity and calcium-independent heterophilic cell-cell adhesion activity with IGSF4, PVRL1 and PVRL3.

Note

For Research Use Only , Not for Diagnostic Use.