

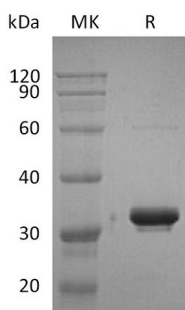
Product Name: Recombinant Human IgG2 Fc (228AA)
Catalog #: PHH0849



Summary

| | |
|---------------------------------|--|
| Name | IgG2 Fc |
| Purity | Greater than 95% as determined by reducing SDS-PAGE |
| Endotoxin level | <1 EU/μg as determined by LAL test. |
| Construction | Recombinant Human Ig Gamma-2 Chain C Region is produced by our Mammalian expression system and the target gene encoding Glu99-Lys326(Val161Met, Ser257Ala) is expressed. |
| Accession # | P01859 |
| Host | Human Cells |
| Species | Human |
| Predicted Molecular Mass | 25.7 KDa |
| Formulation | Lyophilized from a 0.2 μm filtered solution of 20mM PB, 5% Mannitol, 50mM NaCl, 0.05% Tween80, pH6.0. |
| Shipping | The product is shipped at ambient temperature. Upon receipt, store it immediately at the temperature listed below. |
| Stability&Storage | Store at ≤-70°C, stable for 6 months after receipt. Store at ≤-70°C, stable for 3 months under sterile conditions after opening. Please minimize freeze-thaw cycles. |
| Reconstitution | Always centrifuge tubes before opening. Do not mix by vortex or pipetting. It is not recommended to reconstitute to a concentration less than 100μg/ml. Dissolve the lyophilized protein in distilled water. Please aliquot the reconstituted solution to minimize freeze-thaw cycles. |

SDS-PAGE image



Background

Product Name: Recombinant Human IgG2 Fc (228AA)
Catalog #: PHH0849



Alternative Names Ig gamma-2 chain C region; IgG2 Fc

Background As a monomeric immunoglobulin that is predominately involved in the secondary antibody response and the only isotype that can pass through the human placenta, Immunoglobulin G (IgG) is synthesized and secreted by plasma B cells, and constitutes 75% of serum immunoglobulins in humans. IgG antibodies protect the body against the pathogens by agglutination and immobilization, complement activation, toxin neutralization, as well as the antibody-dependent cell-mediated cytotoxicity (ADCC). IgG tetramer contains two heavy chains (50 kDa) and two light chains (25 kDa) linked by disulfide bonds, that is the two identical halves form the Y-like shape. IgG is digested by pepsin proteolysis into Fab fragment (antigen-binding fragment) and Fc fragment (//

Note

For Research Use Only , Not for Diagnostic Use.