

Product Name: Recombinant Human IFN alpha1 (C-6His)
Catalog #: PHH0823

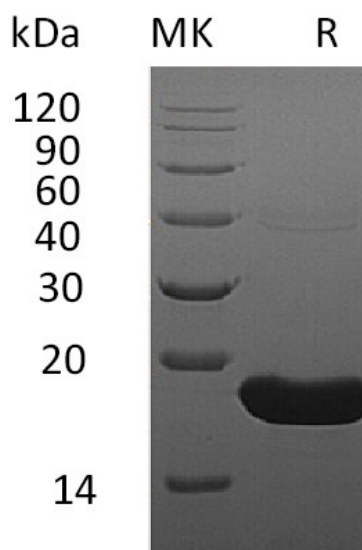


Summary

Name	IFNA1/IFNA13/LeIF D/IFN-alpha 1b/IFN-alphaD/IFN-alpha 1/13
Purity	Greater than 95% as determined by reducing SDS-PAGE
Endotoxin level	<1 EU/μg as determined by LAL test.
Construction	Recombinant Human Interferon Alpha-1 is produced by our Mammalian expression system and the target gene encoding Cys24-Glu189 is expressed with a 6His tag at the C-terminus.
Accession #	P01562
Host	Human Cells
Species	Human
Predicted Molecular Mass	20.4 KDa
Formulation	Lyophilized from a 0.2 μm filtered solution of 20mM PB, 150mM NaCl, pH 7.4.
Shipping	The product is shipped at ambient temperature. Upon receipt, store it immediately at the temperature listed below.
Stability&Storage	Lyophilized protein should be stored at ≤ -20°C, stable for one year after receipt. Reconstituted protein solution can be stored at 2-8°C for 2-7 days. Aliquots of reconstituted samples are stable at ≤ -20°C for 3 months.
Reconstitution	Always centrifuge tubes before opening. Do not mix by vortex or pipetting. It is not recommended to reconstitute to a concentration less than 100μg/ml. Dissolve the lyophilized protein in distilled water. Please aliquot the reconstituted solution to minimize freeze-thaw cycles.

SDS-PAGE image

Product Name: Recombinant Human IFN alpha1 (C-6His)
Catalog #: PHH0823



Alternative Names

Interferon alpha-1/13; IFN-alpha-1/13; Interferon alpha-D; LeIF D; IFNA1; IFNA13

Background

Interferon alpha-1/13 (IFN-alpha-1/13 for short), also known as Interferon alpha-D, is a secreted protein which belongs to the alpha/beta interferon family. It is produced by macrophages. IFN-alpha have antiviral activities. Interferon stimulates the production of two enzymes: a protein kinase and an oligoadenylate synthetase. IFN-alpha exerts a variety of other biological effects, including antitumor and immunomodulatory activities and are increasingly used clinically to treat a range of malignancies, myelodysplasias and autoimmune diseases.

Note

For Research Use Only , Not for Diagnostic Use.