

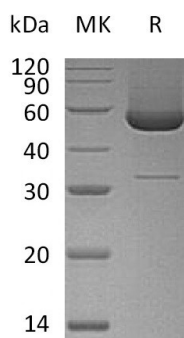
Product Name: Recombinant Human Serpin H1 (C-6His)
Catalog #: PHH0779



Summary

Name	Heat Shock 47kDa/SERPINH1
Purity	Greater than 95% as determined by reducing SDS-PAGE
Endotoxin level	<1 EU/μg as determined by LAL test.
Construction	Recombinant Human Serine Protease Inhibitor-clade H1 is produced by our Mammalian expression system and the target gene encoding Ala19-Leu418 is expressed with a 6His tag at the C-terminus.
Accession #	P50454
Host	Human Cells
Species	Human
Predicted Molecular Mass	45.5 KDa
Formulation	Lyophilized from a 0.2 μm filtered solution of PBS, pH 7.4.
Shipping	The product is shipped at ambient temperature. Upon receipt, store it immediately at the temperature listed below.
Stability&Storage	Store at ≤-70°C, stable for 6 months after receipt. Store at ≤-70°C, stable for 3 months under sterile conditions after opening. Please minimize freeze-thaw cycles.
Reconstitution	Always centrifuge tubes before opening. Do not mix by vortex or pipetting. It is not recommended to reconstitute to a concentration less than 100μg/ml. Dissolve the lyophilized protein in distilled water. Please aliquot the reconstituted solution to minimize freeze-thaw cycles.

SDS-PAGE image



Background

Product Name: Recombinant Human Serpin H1 (C-6His)
Catalog #: PHH0779

Alternative Names

Serpin H1; 47 kDa Heat Shock Protein; Arsenic-Transactivated Protein 3; AsTP3; Cell Proliferation-Inducing Gene 14 Protein; Collagen-Binding Protein; Colligin; Rheumatoid Arthritis-Related Antigen RA-A47; SERPINH1; CBP1; CBP2; HSP47; SERPINH2

Background

Serpin H1 is a serine proteinase inhibitors Which belongs to the serpin family. Serpin H1 is induced by heat shock. Serpin H1 localizes to the endoplasmic reticulum lumen and binds specifically to collagen. Thus it is thought to be a molecular chaperone involved in the maturation of collagen molecules. Autoantibodies to this protein have been found in patients with rheumatoid arthritis. Serpin H1 may be a marker for cancer and nucleotide polymorphisms in this gene may be associated with preterm birth caused by preterm premature rupture of membranes.

Note

For Research Use Only , Not for Diagnostic Use.