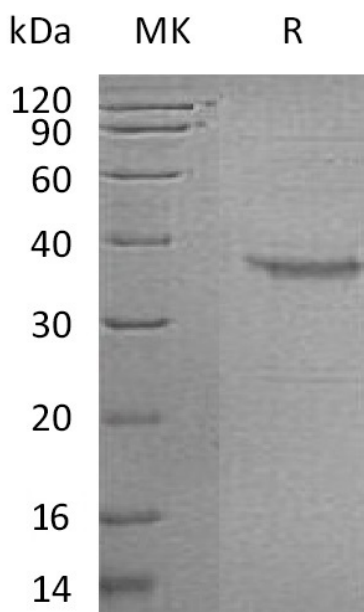


Summary

Name	Growth hormone-releasing factor/GHRF/GHRH/Somatoliberin
Purity	Greater than 95% as determined by reducing SDS-PAGE
Endotoxin level	<1 EU/μg as determined by LAL test.
Construction	Recombinant Human Growth Hormone-releasing Factor is produced by our Mammalian expression system and the target gene encoding Pro21-Leu75 is expressed with a human IgG1 Fc tag at the C-terminus.
Accession #	P01286
Host	Human Cells
Species	Human
Predicted Molecular Mass	33.4 KDa
Formulation	Lyophilized from a 0.2 μm filtered solution of PBS, pH 7.4.
Shipping	The product is shipped at ambient temperature. Upon receipt, store it immediately at the temperature listed below.
Stability&Storage	Store at ≤-70°C, stable for 6 months after receipt. Store at ≤-70°C, stable for 3 months under sterile conditions after opening. Please minimize freeze-thaw cycles.
Reconstitution	Always centrifuge tubes before opening. Do not mix by vortex or pipetting. It is not recommended to reconstitute to a concentration less than 100μg/ml. Dissolve the lyophilized protein in distilled water. Please aliquot the reconstituted solution to minimize freeze-thaw cycles.

SDS-PAGE image

Product Name: Recombinant Human GHRH (C-Fc)
Catalog #: PHH0766



Alternative Names

Somatoliberin; Growth hormone-releasing factor; Somatocrinin; Somatorelin; Growth hormone-releasing hormone; GHRH; GHRF

Background

Growth-hormone-releasing hormone (GHRH) is a releasing hormone for growth hormone. It is a 44-amino acid peptide hormone produced in the arcuate nucleus of the hypothalamus. GHRH first appears in the human hypothalamus between 18 and 29 weeks of gestation, which corresponds to the start of production of growth hormone and other somatotropes in fetuses. GRF is released by the hypothalamus and acts on the adenohypophyse to stimulate the secretion of growth hormone.

Note

For Research Use Only , Not for Diagnostic Use.