

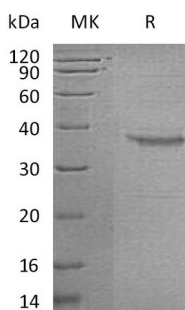
**Product Name: Recombinant Human GHRH (C-Fc)**  
**Catalog #: PHH0766**



## Summary

<b>Name</b>	Growth hormone-releasing factor/GHRF/GHRH/Somatoliberin
<b>Purity</b>	Greater than 95% as determined by reducing SDS-PAGE
<b>Endotoxin level</b>	<1 EU/μg as determined by LAL test.
<b>Construction</b>	Recombinant Human Growth Hormone-releasing Factor is produced by our Mammalian expression system and the target gene encoding Pro21-Leu75 is expressed with a human IgG1 Fc tag at the C-terminus.
<b>Accession #</b>	P01286
<b>Host</b>	Human Cells
<b>Species</b>	Human
<b>Predicted Molecular Mass</b>	33.4 KDa
<b>Formulation</b>	Lyophilized from a 0.2 μm filtered solution of PBS, pH 7.4.
<b>Shipping</b>	The product is shipped at ambient temperature. Upon receipt, store it immediately at the temperature listed below.
<b>Stability&amp;Storage</b>	Store at ≤-70°C, stable for 6 months after receipt. Store at ≤-70°C, stable for 3 months under sterile conditions after opening. Please minimize freeze-thaw cycles.
<b>Reconstitution</b>	Always centrifuge tubes before opening. Do not mix by vortex or pipetting. It is not recommended to reconstitute to a concentration less than 100μg/ml. Dissolve the lyophilized protein in distilled water. Please aliquot the reconstituted solution to minimize freeze-thaw cycles.

## SDS-PAGE image



## Background

**Product Name: Recombinant Human GHRH (C-Fc)**  
**Catalog #: PHH0766**

---



**Alternative Names**

Somatoliberin; Growth hormone-releasing factor; Somatocrinin; Somatorelin; Growth hormone-releasing hormone; GHRH; GHRF

**Background**

Growth-hormone-releasing hormone (GHRH) is a releasing hormone for growth hormone. It is a 44-amino acid peptide hormone produced in the arcuate nucleus of the hypothalamus. GHRH first appears in the human hypothalamus between 18 and 29 weeks of gestation, which corresponds to the start of production of growth hormone and other somatotropes in fetuses. GRF is released by the hypothalamus and acts on the adenohypophyse to stimulate the secretion of growth hormone.

**Note**

For Research Use Only , Not for Diagnostic Use.