

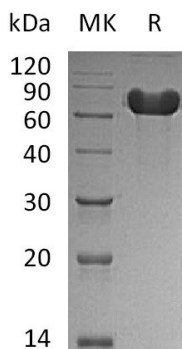
Product Name: Recombinant Human GOLM1 (C-6His)
Catalog #: PHH0754



Summary

Name	GOLM1/Golgi membrane protein 1/Golgi Membrane Protein GP73
Purity	Greater than 95% as determined by reducing SDS-PAGE
Endotoxin level	<1 EU/μg as determined by LAL test.
Construction	Recombinant Human Golgi Membrane Protein 1 is produced by our Mammalian expression system and the target gene encoding Ser36-Leu401 is expressed with a 6His tag at the C-terminus.
Accession #	Q8NBJ4
Host	Human Cells
Species	Human
Predicted Molecular Mass	42.6 KDa
Formulation	Lyophilized from a 0.2 μm filtered solution of 20mM PB, 150mM NaCl, pH 7.4.
Shipping	The product is shipped at ambient temperature. Upon receipt, store it immediately at the temperature listed below.
Stability&Storage	Store at ≤-70°C, stable for 6 months after receipt. Store at ≤-70°C, stable for 3 months under sterile conditions after opening. Please minimize freeze-thaw cycles.
Reconstitution	Always centrifuge tubes before opening. Do not mix by vortex or pipetting. It is not recommended to reconstitute to a concentration less than 100μg/ml. Dissolve the lyophilized protein in distilled water. Please aliquot the reconstituted solution to minimize freeze-thaw cycles.

SDS-PAGE image



Product Name: Recombinant Human GOLM1 (C-6His)
Catalog #: PHH0754



Background

Alternative Names

Golgi Membrane Protein 1; Golgi Membrane Protein GP73; Golgi Phosphoprotein 2; GOLM1; C9orf155; GOLPH2

Background

Golgi Membrane Protein 1 (GOLM1) belongs to the GOLM1/CASC4 family, GOLM1 is a single-pass type II membrane protein and can be found in many tissues. GOLM1 is overexpressed in prostate cancer and lung adenocarcinoma tissue. GOLM1 can be up-regulated in response to viral infection. GOLM1 is induced by the E1A adenoviral protein. GOLM1 plays a key role in the sorting and modification of proteins exported from the endoplasmic reticulum.

Note

For Research Use Only , Not for Diagnostic Use.