

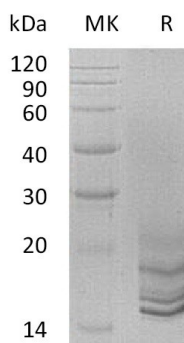
Product Name: Recombinant Human GNRH2 (C-6His)
Catalog #: PHH0752



Summary

Name	GnRH II/GNRH2/Progonadoliberin-2
Purity	Greater than 95% as determined by reducing SDS-PAGE
Endotoxin level	<1 EU/μg as determined by LAL test.
Construction	Recombinant Human Progonadoliberin-2 is produced by our Mammalian expression system and the target gene encoding Gln24-Val120 is expressed with a 6His tag at the C-terminus.
Accession #	O43555
Host	Human Cells
Species	Human
Predicted Molecular Mass	11.6 KDa
Formulation	Lyophilized from a 0.2 μm filtered solution of PBS, pH 7.4.
Shipping	The product is shipped at ambient temperature. Upon receipt, store it immediately at the temperature listed below.
Stability&Storage	Store at ≤-70°C, stable for 6 months after receipt. Store at ≤-70°C, stable for 3 months under sterile conditions after opening. Please minimize freeze-thaw cycles.
Reconstitution	Always centrifuge tubes before opening. Do not mix by vortex or pipetting. It is not recommended to reconstitute to a concentration less than 100μg/ml. Dissolve the lyophilized protein in distilled water. Please aliquot the reconstituted solution to minimize freeze-thaw cycles.

SDS-PAGE image



Background

Product Name: Recombinant Human GNRH2 (C-6His)
Catalog #: PHH0752



Alternative Names

Progonadoliberin-2; Progonadoliberin II; Gonadoliberin-2; Gonadoliberin II; Gonadotropin-Releasing Hormone II; GnRH II; Luliberin II; Luteinizing Hormone-Releasing Hormone II; LH-RH II; GnRH-Associated Peptide 2; GnRH-Associated Peptide II; GNRH2

Background

Progonadoliberin-2, also known as Progonadoliberin II and GNRH2, belongs to the gonadotropin-releasing hormone family. GNRH2 is specially expressed in midbrain, at significantly higher levels outside the brain (up to 30-fold). GNRH2 can be cleaved into two chains, gonadoliberin-2 and GnRH-associated peptide 2. gonadoliberin-2 regulates reproduction in females by stimulating the secretion of both luteinizing- and follicle-stimulating hormones. The proproteins produce three transcript variants, but produce the same peptide hormone.

Note

For Research Use Only , Not for Diagnostic Use.