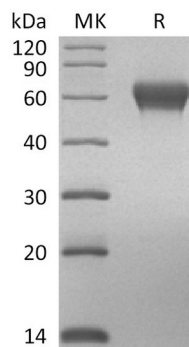


Product Name: Recombinant Human GLP1R (Arg24-Tyr145) (C-Fc)
Catalog #: PHH0736

Summary

Name	GLP1R
Purity	Greater than 95% as determined by reducing SDS-PAGE
Endotoxin level	<1 EU/μg as determined by LAL test.
Construction	Recombinant Human Glucagon-like Peptide 1 Receptor is produced by our Mammalian expression system and the target gene encoding Arg24-Tyr145 is expressed with a human IgG1 Fc tag at the C-terminus.
Accession #	P43220
Host	Human Cells
Species	Human
Predicted Molecular Mass	41.2 KDa
Formulation	Lyophilized from a 0.2 μm filtered solution of PBS, pH 7.4.
Shipping	The product is shipped at ambient temperature. Upon receipt, store it immediately at the temperature listed below.
Stability&Storage	Store at ≤-70°C, stable for 6 months after receipt. Store at ≤-70°C, stable for 3 months under sterile conditions after opening. Please minimize freeze-thaw cycles.
Reconstitution	Always centrifuge tubes before opening. Do not mix by vortex or pipetting. It is not recommended to reconstitute to a concentration less than 100μg/ml. Dissolve the lyophilized protein in distilled water. Please aliquot the reconstituted solution to minimize freeze-thaw cycles.

SDS-PAGE image



Background

Product Name: Recombinant Human GLP1R (Arg24-Tyr145) (C-ter)
Catalog #: PHH0736

Alternative Names

Glucagon-like peptide 1 receptor; GLP-1 receptor; GLP-1-R

Background

GLP1R Belongs to the G-protein coupled receptor 2 family that is synthesized as a 172 amino acid (aa). GLP1R is expressed in pancreas, lung, heart, kidney, hypothalamus, and stomach. It may form homodimers and heterodimers with GIPR. GLP1R is a receptor for glucagon-like peptide 1. The activity of this receptor is mediated by G proteins which activate adenylyl cyclase.

Note

For Research Use Only , Not for Diagnostic Use.