

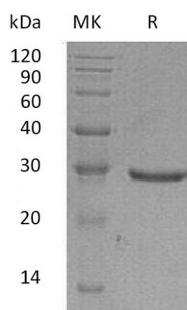
Product Name: Recombinant Human GLIPR1 (C-6His)
Catalog #: PHH0735



Summary

Name	Glioma pathogenesis-related protein 1/GliPR1
Purity	Greater than 95% as determined by reducing SDS-PAGE
Endotoxin level	<1 EU/μg as determined by LAL test.
Construction	Recombinant Human Glioma Pathogenesis-Related Protein 1 is produced by our Mammalian expression system and the target gene encoding Asn22-Arg232 is expressed with a 6His tag at the C-terminus.
Accession #	P48060
Host	Human Cells
Species	Human
Predicted Molecular Mass	25.16 KDa
Formulation	Lyophilized from a 0.2 μm filtered solution of 20mM PB, 150mM NaCl, pH 7.4.
Shipping	The product is shipped at ambient temperature. Upon receipt, store it immediately at the temperature listed below.
Stability&Storage	Store at ≤-70°C, stable for 6 months after receipt. Store at ≤-70°C, stable for 3 months under sterile conditions after opening. Please minimize freeze-thaw cycles.
Reconstitution	Always centrifuge tubes before opening. Do not mix by vortex or pipetting. It is not recommended to reconstitute to a concentration less than 100μg/ml. Dissolve the lyophilized protein in distilled water. Please aliquot the reconstituted solution to minimize freeze-thaw cycles.

SDS-PAGE image



Background

Product Name: Recombinant Human GLIPR1 (C-6His)
Catalog #: PHH0735



Alternative Names

Glioma Pathogenesis-Related Protein 1; GliPR 1; Protein RTVP-1; GLIPR1; GLIPR; RTVP1

Background

Glioma Pathogenesis-Related Protein 1 (GLIPR1) is a member of the CRISP family. It is a single-pass membrane protein with 266 amino acids. GLIPR1 is highly expressed in the lung and kidney and lowly expressed in the heart and liver. It is also highly expressed in cell lines that are derived from nervous system tumors arising from glia; conversely, it is lowly expressed in non-glial-derived nervous system tumor cell lines. GLIPR1 is only expressed in brain tumor glioblastoma multiforme/astrocytoma and not expressed in other nervous system tumors nor normal adult or fetal tissues.

Note

For Research Use Only , Not for Diagnostic Use.