

Product Name: Recombinant Human GFRA1 (C-6His)
Catalog #: PHH0728

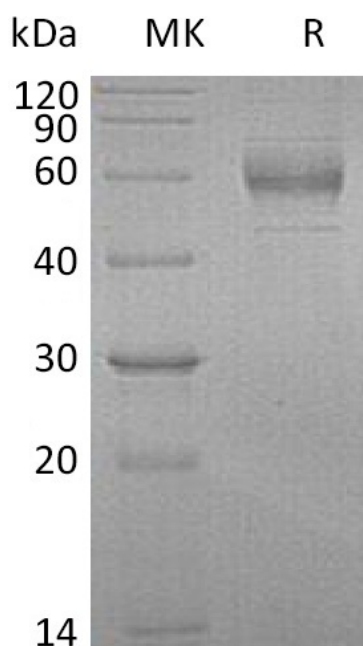


Summary

| | |
|---------------------------------|--|
| Name | GFR alpha-1/GFRA1/GDNF family receptor alpha-1/RETL1/RET ligand 1/TRNR1 |
| Purity | Greater than 95% as determined by reducing SDS-PAGE |
| Endotoxin level | <1 EU/μg as determined by LAL test. |
| Construction | Recombinant Human Glial Cell line-derived Neurotrophic Factor Receptor Alpha 1 is produced by our Mammalian expression system and the target gene encoding Asp25-Lys429 is expressed with a 6His tag at the C-terminus. |
| Accession # | P56159-2 |
| Host | Human Cells |
| Species | Human |
| Predicted Molecular Mass | 46.28 KDa |
| Formulation | Lyophilized from a 0.2 μm filtered solution of 20mM His-HCl, 8% Trehalose, 2% Mannitol, 0.05% Tween80, pH6.0. |
| Shipping | The product is shipped at ambient temperature. Upon receipt, store it immediately at the temperature listed below. |
| Stability&Storage | Store at ≤-70°C, stable for 6 months after receipt. Store at ≤-70°C, stable for 3 months under sterile conditions after opening. Please minimize freeze-thaw cycles. |
| Reconstitution | Always centrifuge tubes before opening. Do not mix by vortex or pipetting. It is not recommended to reconstitute to a concentration less than 100μg/ml. Dissolve the lyophilized protein in distilled water. Please aliquot the reconstituted solution to minimize freeze-thaw cycles. |

SDS-PAGE image

Product Name: Recombinant Human GFRA1 (C-6His)
Catalog #: PHH0728



Alternative Names

GDNF Family Receptor Alpha-1; GDNF Receptor Alpha-1; GDNFR-Alpha-1; GFR-Alpha-1; RET Ligand 1; TGF-Beta-Related Neurotrophic Factor Receptor 1; GFRA1; GDNFRA; RETL1; TRNR1

Background

Glial Cell Line-Derived Neurotrophic Factor Family Receptor α -1 (GDNFR α 1) is a glycosylphosphatidylinositol (GPI) linked cell surface protein belonging to GDNF-family receptor α subtype which consists of at least four members. GFR α 1 and GFR α 2 are the cognate co-receptor for the neurotrophic factor neurturin mediating the NRTN-induced autophosphorylation and activation of the RET tyrosine kinase receptor. Soluble GFR α s released enzymatically from the cell surface by phosphatidylinositol phospholipase C, as well as recombinantly produced soluble GFR α 1, can also bind with high affinity to GDNF and trigger the activation of Ret tyrosine kinase. Human GFR α 1 shares 93% amino acid identity with mouse GFR α 1. The expression of the various GFR α s are differentially regulated in the central and peripheral nervous system, suggesting complementary roles for the GFR α s in mediating the activities of the GDNF family of neurotrophic factors.

Note

For Research Use Only , Not for Diagnostic Use.