

Product Name: Recombinant Human ERP27 (C-6His)
Catalog #: PHH0603

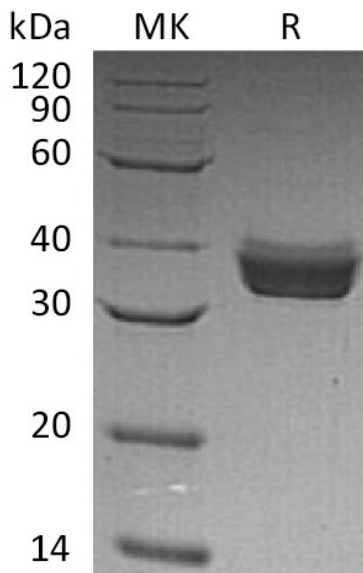


Summary

Name	ERP27/Endoplasmic reticulum resident protein 27
Purity	Greater than 95% as determined by reducing SDS-PAGE
Endotoxin level	<1 EU/μg as determined by LAL test.
Construction	Recombinant Human Endoplasmic Reticulum Resident Protein 27 is produced by our Mammalian expression system and the target gene encoding Glu26-Leu273 is expressed with a 6His tag at the C-terminus.
Accession #	Q96DN0
Host	Human Cells
Species	Human
Predicted Molecular Mass	28.79 KDa
Formulation	Lyophilized from a 0.2 μm filtered solution of 20 mM PB, 50 mM NaCl, 6% Trehalose, 2% Mannitol, 0.05% Tween80, pH7.0.
Shipping	The product is shipped at ambient temperature. Upon receipt, store it immediately at the temperature listed below.
Stability&Storage	Lyophilized protein should be stored at ≤ -20°C, stable for one year after receipt. Reconstituted protein solution can be stored at 2-8°C for 2-7 days. Aliquots of reconstituted samples are stable at ≤ -20°C for 3 months.
Reconstitution	Always centrifuge tubes before opening. Do not mix by vortex or pipetting. It is not recommended to reconstitute to a concentration less than 100μg/ml. Dissolve the lyophilized protein in distilled water. Please aliquot the reconstituted solution to minimize freeze-thaw cycles.

SDS-PAGE image

Product Name: Recombinant Human ERP27 (C-6His)
Catalog #: PHH0603



Alternative Names

Endoplasmic Reticulum Resident Protein 27; ER Protein 27; ERp27; ERP27; C12orf46

Background

Endoplasmic reticulum resident protein 27, also known as ER protein 27, C12orf46 and ERP27, is an endoplasmic reticulum luminal protein which is a member of the protein disulfide isomerase family. ERP27 contains one thioredoxin domain and does not contain a CXXC active site motif. ERP27 is widely expressed in many tissues; it has highest expression in pancreas, with lower levels in spleen, lung, kidney, thymus, and bone marrow. ERP27 interacts with PDIA3 and binds somatostatin-14 via hydrophobic interactions. ERP27 may act as a protease, protein disulfide isomerase, thiol-disulfide oxidase or phospholipase.

Note

For Research Use Only , Not for Diagnostic Use.