

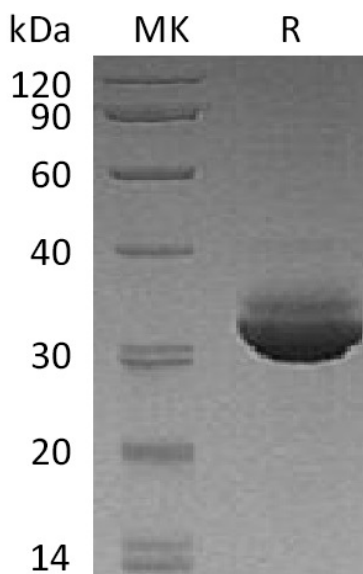
**Product Name: Recombinant Human CELA3A (C-6His)**  
**Catalog #: PHH0568**



## Summary

<b>Name</b>	ELA3A/CELA3A/ELA3
<b>Purity</b>	Greater than 95% as determined by reducing SDS-PAGE
<b>Endotoxin level</b>	<1 EU/μg as determined by LAL test.
<b>Construction</b>	Recombinant Human Chymotrypsin-Like Elastase Family Member 3A is produced by our Mammalian expression system and the target gene encoding Ser16-His270 is expressed with a 6His tag at the C-terminus.
<b>Accession #</b>	AAH07028.1
<b>Host</b>	Human Cells
<b>Species</b>	Human
<b>Predicted Molecular Mass</b>	28.9 KDa
<b>Formulation</b>	Supplied as a 0.2 μm filtered solution of 20mM Tris-HCl, 150mM NaCl, 10% Glycerol, pH 7.5.
<b>Shipping</b>	The product is shipped on dry ice/polar packs. Upon receipt, store it immediately at the temperature listed below.
<b>Stability&amp;Storage</b>	Store at ≤-70°C, stable for 6 months after receipt. Store at ≤-70°C, stable for 3 months under sterile conditions after opening. Please minimize freeze-thaw cycles.
<b>Reconstitution</b>	

## SDS-PAGE image



**Product Name: Recombinant Human CELA3A (C-6His)**  
**Catalog #: PHH0568**

---



### **Alternative Names**

Chymotrypsin-Like Elastase Family Member 3A; Elastase IIIA; Elastase-3A; Protease E; CELA3A; ELA3; ELA3A

### **Background**

Chymotrypsin-Like Elastase Family Member 3A (CELA3A) is an enzyme that contains one peptidase S1 domain. ELA3A belongs to the peptidase S1 family of the Elastase subfamily. ELA3A is secreted from the pancreas as a zymogen and, like other serine proteases such as trypsin, chymotrypsin and kallikrein, it has a digestive function in the intestine. ELA3A may also function in the intestinal transport and metabolism of cholesterol. ELA3A is efficient protease with alanine specificity but only little elastolytic activity. ELA3A preferentially cleaves proteins after alanine residues.

### **Note**

For Research Use Only , Not for Diagnostic Use.