

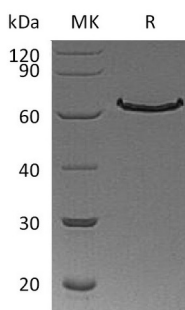
**Product Name: Recombinant Human DLL1 (C-6His)**  
**Catalog #: PHH0525**



## Summary

<b>Name</b>	DLL1/Delta-like Protein 1
<b>Purity</b>	Greater than 95% as determined by reducing SDS-PAGE
<b>Endotoxin level</b>	<1 EU/μg as determined by LAL test.
<b>Construction</b>	Recombinant Human Delta-like Protein 1 is produced by our Mammalian expression system and the target gene encoding Gln18-Gly540 is expressed with a 6His tag at the C-terminus.
<b>Accession #</b>	O00548
<b>Host</b>	Human Cells
<b>Species</b>	Human
<b>Predicted Molecular Mass</b>	57.3 KDa
<b>Formulation</b>	Lyophilized from a 0.2 μm filtered solution of 20mM Hepes, 150mM NaCl, 1mM EDTA, pH 7.4.
<b>Shipping</b>	The product is shipped at ambient temperature. Upon receipt, store it immediately at the temperature listed below.
<b>Stability&amp;Storage</b>	Store at ≤-70°C, stable for 6 months after receipt. Store at ≤-70°C, stable for 3 months under sterile conditions after opening. Please minimize freeze-thaw cycles.
<b>Reconstitution</b>	Always centrifuge tubes before opening. Do not mix by vortex or pipetting. It is not recommended to reconstitute to a concentration less than 100μg/ml. Dissolve the lyophilized protein in distilled water. Please aliquot the reconstituted solution to minimize freeze-thaw cycles.

## SDS-PAGE image



## Background

**Product Name: Recombinant Human DLL1 (C-6His)**  
**Catalog #: PHH0525**

---



**Alternative Names**

Delta-like protein 1; Drosophila Delta homolog 1; Delta1; H-Delta-1; DLL1

**Background**

Delta-like protein 1 (DLL1) is a type I transmembrane protein that belongs to the Delta/Serrate/Lag2 (DSL) family of Notch ligands. Mature human DLL1 consists of a 528 amino acid (aa) extracellular domain (ECD) with one DSL domain and eight EGF-like repeats, a 23 aa transmembrane segment, and a 155 aa cytoplasmic domain. Within the ECD, human DLL1 shares 91% aa sequence identity with mouse and rat DLL1. The residual membranebound portion of DLL1 can be cleaved by presenilin-dependent  $\gamma$ -secretase, enabling the cytoplasmic domain to migrate to the nucleus. DLL1 localizes to adherens junctions on neuronal processes through its association with the scaffolding protein MAGI1. DLL1 is widely expressed, and it plays an important role in embryonic somite formation, cochlear hair cell differentiation, plus B and T lymphocyte differentiation. The upregulation of DLL1 in arterial endothelial cells following injury or angiogenic stimulation is central to postnatal arteriogenesis. DLL1 is also overexpressed in cervical carcinoma and glioma and contributes to tumor progression.

**Note**

For Research Use Only , Not for Diagnostic Use.