

**Product Name: Recombinant Human CTLA-4 (C-Fc)**  
**Catalog #: PHH0517**



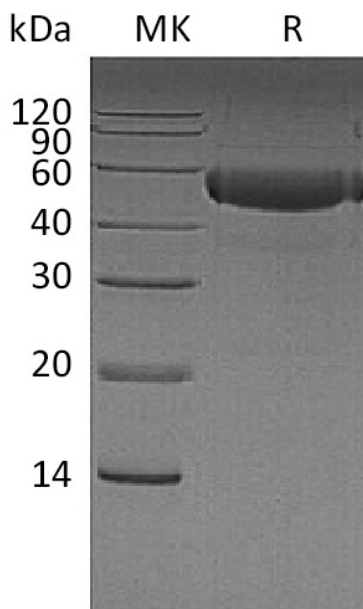
---

## Summary

|                                 |  |
|---------------------------------|--|
| <b>Name</b>                     | CTLA-4/CD152/Cytotoxic T-lymphocyte protein 4  |
| <b>Purity</b>                   | Greater than 95% as determined by reducing SDS-PAGE  |
| <b>Endotoxin level</b>          | <1 EU/μg as determined by LAL test.  |
| <b>Construction</b>             | Recombinant Human Cytotoxic T-lymphocyte Protein 4 is produced by our Mammalian expression system and the target gene encoding Lys36-Asp161 is expressed with a human IgG1 Fc tag at the C-terminus.   |
| <b>Accession #</b>              | P16410   |
| <b>Host</b>                     | Human Cells  |
| <b>Species</b>                  | Human  |
| <b>Predicted Molecular Mass</b> | 39.6 KDa   |
| <b>Formulation</b>              | Lyophilized from a 0.2 μm filtered solution of PBS, pH 7.4.  |
| <b>Shipping</b>                 | The product is shipped at ambient temperature. Upon receipt, store it immediately at the temperature listed below.   |
| <b>Stability&amp;Storage</b>    | Lyophilized protein should be stored at ≤ -20°C, stable for one year after receipt. Reconstituted protein solution can be stored at 2-8°C for 2-7 days. Aliquots of reconstituted samples are stable at ≤ -20°C for 3 months.  |
| <b>Reconstitution</b>           | Always centrifuge tubes before opening. Do not mix by vortex or pipetting. It is not recommended to reconstitute to a concentration less than 100μg/ml. Dissolve the lyophilized protein in distilled water. Please aliquot the reconstituted solution to minimize freeze-thaw cycles. |

## SDS-PAGE image

**Product Name: Recombinant Human CTLA-4 (C-Fc)**  
**Catalog #: PHH0517**



### **Alternative Names**

Cytotoxic T-lymphocyte protein 4; Cytotoxic T-lymphocyte-associated antigen 4; CTLA4; CD152

### **Background**

Cytotoxic T-lymphocyte 4(CTLA-4,CD152), is a type I transmembrane T cell inhibitory molecule that is a member of the Ig superfamily. Human or mouse CTLA4 cDNA encodes 223 amino acids (aa) including a 35 aa signal sequence, a 126 aa extracellular domain (ECD) with one Ig-like V-type domain, a 21 aa transmembrane (TM) sequence, and a 41 aa cytoplasmic sequence. It is widely expressed with highest levels in lymphoid tissues. CD28 and CTLA-4, together with their ligands, B7-1 and B7-2, constitute one of the dominant costimulatory pathways that regulate T and B cell responses. CD28 and CTLA-4 are structurally homologous molecules that are members of the immunoglobulin (Ig) gene superfamily. CTLA4 transmits an inhibitory signal to T cells, whereas CD28 transmits a stimulatory signal. Intracellular CTLA4 is also found in regulatory T Cells and may play an important role in their functions. T cell activation through the T cell receptor and CD28 leads to increased expression of CTLA4.

### **Note**

For Research Use Only , Not for Diagnostic Use.