

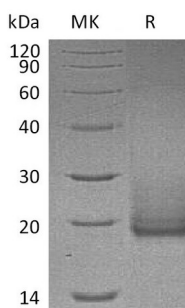
Product Name: Recombinant Human Cryptic (C-6His)
Catalog #: PHH0455



Summary

Name	Cryptic protein/cryptic
Purity	Greater than 95% as determined by reducing SDS-PAGE
Endotoxin level	<1 EU/μg as determined by LAL test.
Construction	Recombinant Human Cryptic Protein is produced by our Mammalian expression system and the target gene encoding Tyr26-Gly169 is expressed with a 6His tag at the C-terminus.
Accession #	P0CG37
Host	Human Cells
Species	Human
Predicted Molecular Mass	16.9 KDa
Formulation	Lyophilized from a 0.2 μm filtered solution of PBS, pH 7.4.
Shipping	The product is shipped at ambient temperature. Upon receipt, store it immediately at the temperature listed below.
Stability&Storage	Store at ≤-70°C, stable for 6 months after receipt. Store at ≤-70°C, stable for 3 months under sterile conditions after opening. Please minimize freeze-thaw cycles.
Reconstitution	Always centrifuge tubes before opening. Do not mix by vortex or pipetting. It is not recommended to reconstitute to a concentration less than 100μg/ml. Dissolve the lyophilized protein in distilled water. Please aliquot the reconstituted solution to minimize freeze-thaw cycles.

SDS-PAGE image



Background

Product Name: Recombinant Human Cryptic (C-6His)
Catalog #: PHH0455



Alternative Names

Cryptic protein;Cryptic family protein 1;CFC1

Background

Cryptic (CFC1) is a member of the epidermal growth factor (EGF)- Cripto, Frl-1, and Cryptic (CFC) family. It contains an EGF-like domain, and is glycosylated on its N-terminal during post-translational modification. Cryptic is identified as a NODAL coreceptor involved in the correct establishment of the left-right axis. It may play a role in mesoderm and/or neural patterning during gastrulation. The unnormal expression of this gene may causes a series of diseases such as HTX2, Transposition of the great arteries dextro-looped 2, and Conotruncal heart malformations.

Note

For Research Use Only , Not for Diagnostic Use.