

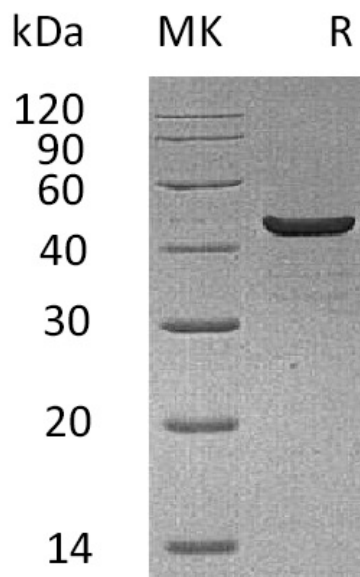
Product Name: Recombinant Human CKMM (C-6His)
Catalog #: PHH0452



Summary

Name	Creatine Kinase MM/CKMM/CKM/creatine kinase, muscle
Purity	Greater than 95% as determined by reducing SDS-PAGE
Endotoxin level	<1 EU/μg as determined by LAL test.
Construction	Recombinant Human Creatine Kinase, Muscle is produced by our Mammalian expression system and the target gene encoding Met1-Lys381 is expressed with a 6His tag at the C-terminus.
Accession #	AAP35439.1
Host	Human Cells
Species	Human
Predicted Molecular Mass	44.1 KDa
Formulation	Supplied as a 0.2 μm filtered solution of PBS, 5% Sucrose, 10% Glycerol, 0.02% Tween80, pH7.4.
Shipping	The product is shipped on dry ice/polar packs. Upon receipt, store it immediately at the temperature listed below.
Stability&Storage	Store at ≤-70°C, stable for 6 months after receipt. Store at ≤-70°C, stable for 3 months under sterile conditions after opening. Please minimize freeze-thaw cycles.
Reconstitution	

SDS-PAGE image



Product Name: Recombinant Human CKMM (C-6His)
Catalog #: PHH0452



Alternative Names

Creatine kinase M-type; Creatine kinase M chain; M-CK; CKM; CKMM

Background

Creatine kinase M-type is also known as Creatine kinase M chain, M-CK. It is a protein that in humans is encoded by the CKM gene. It belongs to the ATP:guanido phosphotransferase family, containing 1 phosphagen kinase C-terminal domain and 1 phosphagen kinase N-terminal domain. Creatine kinase M-type can reversibly catalyzes the transfer of phosphate between ATP and various phosphagens. It plays a central role in energy transduction in tissues with large, fluctuating energy demands, such as skeletal muscle, heart, brain and spermatozoa.

Note

For Research Use Only , Not for Diagnostic Use.