

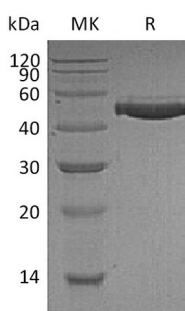
Product Name: Recombinant Human CFH (C-6His)
Catalog #: PHH0439



Summary

Name	Complement factor H/CFH/beta-1-H-globulin
Purity	Greater than 95% as determined by reducing SDS-PAGE
Endotoxin level	<1 EU/μg as determined by LAL test.
Construction	Recombinant Human Complement Factor H is produced by our Mammalian expression system and the target gene encoding Glu19-Leu449 is expressed with a 6His tag at the C-terminus.
Accession #	P08603-2
Host	Human Cells
Species	Human
Predicted Molecular Mass	50 KDa
Formulation	Supplied as a 0.2 μm filtered solution of PBS, 20% Glycerol, 5% Trehalose, pH 7.4.
Shipping	The product is shipped on dry ice/polar packs. Upon receipt, store it immediately at the temperature listed below.
Stability&Storage	Store at ≤-70°C, stable for 6 months after receipt. Store at ≤-70°C, stable for 3 months under sterile conditions after opening. Please minimize freeze-thaw cycles.
Reconstitution	

SDS-PAGE image



Background

Alternative Names	Complement factor H; CFH
Background	Complement Factor H (CFH) is a secreted protein which is a member of the regulators of complement activation family and is a complement control protein. It

Product Name: Recombinant Human CFH (C-6His)
Catalog #: PHH0439



is expressed by the liver and secreted in plasma. Its principal function is to regulate the Alternative Pathway of the complement system, ensuring that the complement system is directed towards pathogens or other dangerous material and does not damage host tissue. Factor H regulates complement activation on self cells and surfaces by possessing both cofactor activity for the Factor I mediated C3b cleavage, and decay accelerating activity against the alternative pathway C3-convertase, C3bBb. Factor H exerts its protective action on self cells and self surfaces but not on the surfaces of bacteria or viruses, because it binds to glycosaminoglycans (GAGs) that are generally present on host cells but not, normally, on pathogen surfaces.

Note

For Research Use Only , Not for Diagnostic Use.