

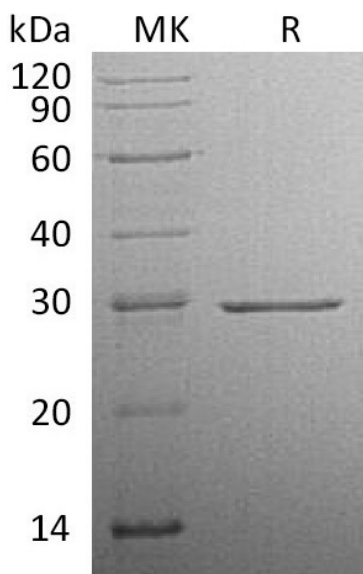
Product Name: Recombinant Human CFD (C-10His)
Catalog #: PHH0438



Summary

Name	Complement Factor D/Adipsin
Purity	Greater than 95% as determined by reducing SDS-PAGE
Endotoxin level	<1 EU/μg as determined by LAL test.
Construction	Recombinant Human Complement Factor D is produced by our Mammalian expression system and the target gene encoding Ile26-Ala253 is expressed with a 10His tag at the C-terminus.
Accession #	P00746
Host	Human Cells
Species	Human
Predicted Molecular Mass	25.8 KDa
Formulation	Supplied as a 0.2 μm filtered solution of 20mM Tris-HCl, 500mM NaCl, 2mM CaCl ₂ , 5% Trehalose, 50% Glycerol, pH 8.5.
Shipping	The product is shipped on dry ice/polar packs. Upon receipt, store it immediately at the temperature listed below.
Stability&Storage	Store at ≤-70°C, stable for 6 months after receipt. Store at ≤-70°C, stable for 3 months under sterile conditions after opening. Please minimize freeze-thaw cycles.
Reconstitution	

SDS-PAGE image



Product Name: Recombinant Human CFD (C-10His)
Catalog #: PHH0438



Alternative Names

Complement factor D; CFD; Adipsin; C3 convertase activator; Properdin factor D; DF; PFD

Background

Complement factor D, also known as adipsin, is a member of the chymotrypsin family of serine proteases, which plays an essential role in host defense as the rate-limiting enzyme in the alternative pathway of complement activation. Complement factor D activates a convertase (C3bBb) responsible for cleavage of the complement protein C3, which leads to the activation of terminal complement component C5-9 to form the membrane attack complex on microbial or cellular surfaces. It also functions in the regulation of systemic energy balance and physiologic and pathologic processes, including immunity and inflammation.

Note

For Research Use Only , Not for Diagnostic Use.