

Product Name: Recombinant Human CFB (C-6His)
Catalog #: PHH0436

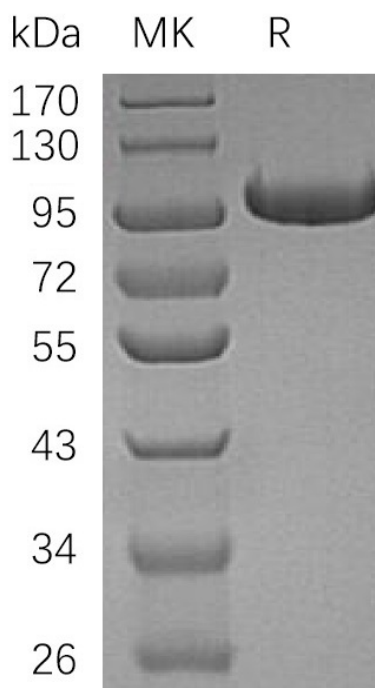


Summary

Name	Complement Factor B
Purity	Greater than 95% as determined by reducing SDS-PAGE
Endotoxin level	<1 EU/μg as determined by LAL test.
Construction	Recombinant Human Complement Factor B is produced by our Mammalian expression system and the target gene encoding Thr26-Leu764 is expressed with a 6His tag at the C-terminus.
Accession #	AAH04143.1
Host	Human Cells
Species	Human
Predicted Molecular Mass	84.07 KDa
Formulation	Supplied as a 0.2 μm filtered solution of 20mM Tris-HCl, 150mM NaCl, pH 8.0.
Shipping	The product is shipped on dry ice/polar packs. Upon receipt, store it immediately at the temperature listed below.
Stability&Storage	Store at ≤-70°C, stable for 6 months after receipt. Store at ≤-70°C, stable for 3 months under sterile conditions after opening. Please minimize freeze-thaw cycles.
Reconstitution	

SDS-PAGE image

Product Name: Recombinant Human CFB (C-6His)
Catalog #: PHH0436



Alternative Names

Complement Factor B; C3/C5 Convertase; Glycine-Rich Beta Glycoprotein; GBG; PBF2; Properdin Factor B; CFB; BF; BFD

Background

Complement Factor B (CFB) belongs to the peptidase S1 family of enzymes. It is expressed by hepatocytes and macrophages and localizes to the major histocompatibility complex (MHC) class III region on chromosome 6. CFB which is a component of the alternate pathway of the complement system is cleaved by factor D into 2 fragments: Ba and Bb. Bb. The active subunit Bb is a serine protease which associates with C3b to form the alternative pathway C3 convertase. Bb is involved in the proliferation of preactivated B lymphocytes, while Ba inhibits their proliferation.

Note

For Research Use Only , Not for Diagnostic Use.