

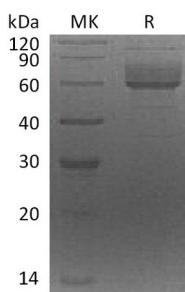
**Product Name: Recombinant Human CLUL1 (C-6His)**  
**Catalog #: PHH0423**



## Summary

<b>Name</b>	Clusterin-like 1/CLUL1
<b>Purity</b>	Greater than 95% as determined by reducing SDS-PAGE
<b>Endotoxin level</b>	<1 EU/μg as determined by LAL test.
<b>Construction</b>	Recombinant Human Clusterin-Like Protein 1 is produced by our Mammalian expression system and the target gene encoding Ala21-Ala442 is expressed with a 6His tag at the C-terminus.
<b>Accession #</b>	Q15846
<b>Host</b>	Human Cells
<b>Species</b>	Human
<b>Predicted Molecular Mass</b>	50.06 KDa
<b>Formulation</b>	Lyophilized from a 0.2 μm filtered solution of 20mM Tris-HCl, 150mM NaCl, pH 8.0.
<b>Shipping</b>	The product is shipped at ambient temperature. Upon receipt, store it immediately at the temperature listed below.
<b>Stability&amp;Storage</b>	Store at ≤-70°C, stable for 6 months after receipt. Store at ≤-70°C, stable for 3 months under sterile conditions after opening. Please minimize freeze-thaw cycles.
<b>Reconstitution</b>	Always centrifuge tubes before opening. Do not mix by vortex or pipetting. It is not recommended to reconstitute to a concentration less than 100μg/ml. Dissolve the lyophilized protein in distilled water. Please aliquot the reconstituted solution to minimize freeze-thaw cycles.

## SDS-PAGE image



## Background

**Product Name: Recombinant Human CLUL1 (C-6His)**  
**Catalog #: PHH0423**



---

**Alternative Names**

Clusterin-Like Protein 1; Retinal-Specific Clusterin-Like Protein; CLUL1

**Background**

Clusterin-Like Protein 1 (CLUL1) is a secreted protein that belongs to the clusterin family. CLUL1 is synthesized as a 466 amino acid precursor that contains a 20 amino acid signal sequence, and a 446 amino acid mature chain. CLUL1 is expressed predominantly by cone photoreceptors of the retina. It has been shown that CLUL1 expression is down-regulated in some forms of retinal disease.

**Note**

For Research Use Only , Not for Diagnostic Use.