

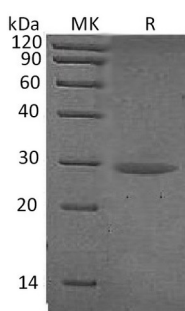
**Product Name: Recombinant Human CTRB1 (C-6His)**  
**Catalog #: PHH0411**



## Summary

<b>Name</b>	Chymotrypsinogen B/CTRB1
<b>Purity</b>	Greater than 95% as determined by reducing SDS-PAGE
<b>Endotoxin level</b>	<1 EU/μg as determined by LAL test.
<b>Construction</b>	Recombinant Human Chymotrypsinogen B is produced by our Mammalian expression system and the target gene encoding Cys19-Asn263 is expressed with a 6His tag at the C-terminus.
<b>Accession #</b>	P17538
<b>Host</b>	Human Cells
<b>Species</b>	Human
<b>Predicted Molecular Mass</b>	26.89 KDa
<b>Formulation</b>	Supplied as a 0.2 μm filtered solution of 20mM Tris-HCl, 150mM NaCl, pH 8.0.
<b>Shipping</b>	The product is shipped on dry ice/polar packs. Upon receipt, store it immediately at the temperature listed below.
<b>Stability&amp;Storage</b>	Store at ≤-70°C, stable for 6 months after receipt. Store at ≤-70°C, stable for 3 months under sterile conditions after opening. Please minimize freeze-thaw cycles.
<b>Reconstitution</b>	

## SDS-PAGE image



## Background

<b>Alternative Names</b>	Chymotrypsinogen B; CTRB1; CTRB
<b>Background</b>	Chymotrypsinogen B (CTRB1) is a 263 amino acid protein with signal peptide (1-18) and Chymotrypsinogen B (19-263). Chymotrypsinogen B have three

**Product Name: Recombinant Human CTRB1 (C-6His)**  
**Catalog #: PHH0411**

---



chains:Chymotrypsin B chain A(19-31), Chymotrypsin B chain B(34-164), Chymotrypsin B chain C (167-263). Chymotrypsinogen B is a Serine Protease Hydrolase secrets into gastrointestinal tract as the inactive precursor Chymotrypsinogen.

### **Note**

For Research Use Only , Not for Diagnostic Use.