

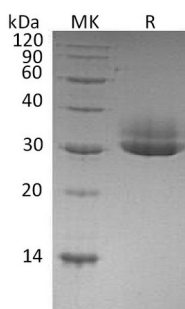
**Product Name: Recombinant Human CTRL (C-6His)**  
**Catalog #: PHH0410**



## Summary

<b>Name</b>	Chymotrypsin-like protease CTRL-1
<b>Purity</b>	Greater than 95% as determined by reducing SDS-PAGE
<b>Endotoxin level</b>	<1 EU/μg as determined by LAL test.
<b>Construction</b>	Recombinant Human Chymotrypsin-Like Protease CTRL-1 is produced by our Mammalian expression system and the target gene encoding Cys19-Asn264 is expressed with a 6His tag at the C-terminus.
<b>Accession #</b>	P40313
<b>Host</b>	Human Cells
<b>Species</b>	Human
<b>Predicted Molecular Mass</b>	27.15 KDa
<b>Formulation</b>	Supplied as a 0.2 μm filtered solution of 20mM Tris-HCl, 150mM NaCl, 10% Glycerol, pH 8.0.
<b>Shipping</b>	The product is shipped on dry ice/polar packs. Upon receipt, store it immediately at the temperature listed below.
<b>Stability&amp;Storage</b>	Store at ≤-70°C, stable for 6 months after receipt. Store at ≤-70°C, stable for 3 months under sterile conditions after opening. Please minimize freeze-thaw cycles.
<b>Reconstitution</b>	

## SDS-PAGE image



## Background

<b>Alternative Names</b>	Chymotrypsin-Like Protease CTRL-1; CTRL; CTRL1
<b>Background</b>	Chymotrypsin-Like Protease CTRL-1 is a protease that belongs to the peptidase S1 family. Human CTRL-1 is synthesized as a 264 amino acid (aa) precursor that

**Product Name: Recombinant Human CTRL (C-6His)**  
**Catalog #: PHH0410**



---

contains an 18 aa signal sequence, 15 aa activation peptide and a 231 aa mature chain. CTRL-1 Contains 1 peptidase S1 domain. It has many molecular functions, such as hydrolase, protease, and serine protease. CTRL-1 plays a role in digest and hydrolyze proteins in biological process.

### **Note**

For Research Use Only , Not for Diagnostic Use.